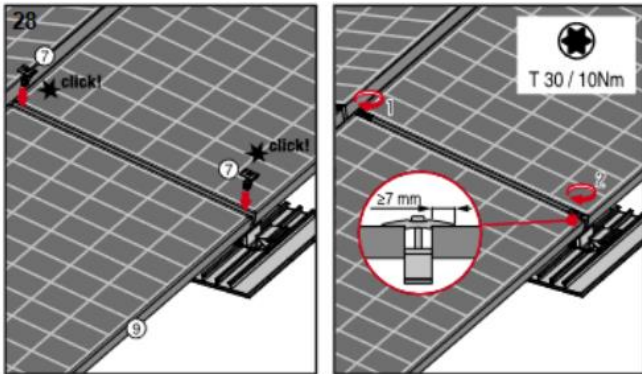


Solar systems of Schweizer:

Instructions - Grounding with the flat roof system MSP-FR

Establishing grounding for the flat roof system MSP-FR

Potential equalisation through conductive middle clamps



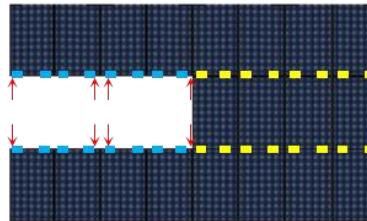
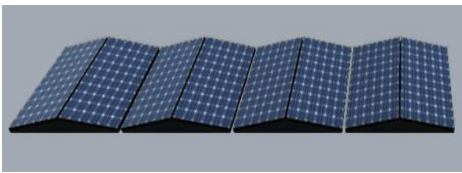
For flat roof systems MSP-FR-EW (east-west) and MSP-FR-S (south) the electrical equalisation of the PV modules with the mounting system can be established by installing the conductive middle clamp MSP-PR-MCG (art. 22626). For this purpose, click in 2 conductive middle clamps at the module joint as shown in the picture and tighten them with a tightening torque of 10 Nm.

A grounding screw MSP-FR-GS (art. 2013706) is **not** required when using the conductive middle clamp!

Exceptions

1. For single row installations:

For single row systems, no middle clamps are required, only end clamps. In this case, potential equalisation **must** be established with the MSP-FR-GS grounding screw.



↑	Grounding screw MSP-FR-GS
■	End clamp MSP-PR-EC / MSP-PR-ECB
■	Middle clamp grounding PR-MCG

2. When using black middle clamps MSP-PR-MCB or MSP-PR-MCBG

If black middle clamps MSP-PR-MCB or MSP-PR-MCBG are used, equipotential bonding **must** be established with the MSP-FR-GS grounding screw.

For exceptions 1 and 2, the grounding screw MSP-FR-GS must be installed in accordance with the MSP-FR installation instructions.

<p>Installation instructions - PV mounting system Flat roof MSP-FR-EW (east-west) Image excerpt - Fig. 22 and 23: Installation grounding</p>	<p>Installation instructions - PV mounting system flat roof MSP-FR-S (south) Image excerpt - Fig. 15: Installation grounding</p>
--	--