

Schweizer

New for the future of energy

MSP PV mounting system and
PV in-roof system Solrif

Innovations
2024



The latest innovations from Schweizer

Just in time for Intersolar, we are unveiling new and enhanced developments for the future of energy, including innovative components for the MSP PV installation system and optimised solutions for the established PV in-roof system Solrif.

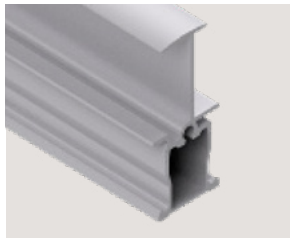
Available with immediate effect

Support and insert profile for pitched roofs

Adapted profiles designed to accommodate large PV modules



MSP-PR-CH support profile



MSP-PR-IC Inlay insert profile

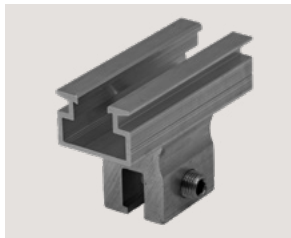
Advantages at a glance

- New 3.55 m profile length
- Reinforced support profiles for MSP-PR-CH with heights of 50 and 70 mm
- MSP-PR-IC Inlay insert profile also available in black (RAL 9005)

Available from July 2024

Metal seam clamp and stainless steel saddle

for rapid non-penetrating installation of metal roofs



MSP-PR-SC 70



MSP-PR-SCC 40

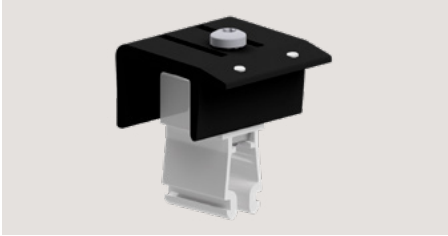
Advantages at a glance

- Module-supporting clamp
- Efficient installation
- Ideal for high snow and wind loads
- DIBt approved and CE compliant
- Metal seam clamp and stainless steel saddle for copper roofs
- Direct connection to MSP-PR

Expected to be available from September 2024*

Conductive end and middle clamp

Equipotential bonding, thanks to uncomplicated installation



MSP-PR-ECB

Advantages at a glance

- Consistently conductive end and middle clamps
- Simplified equipotential bonding of MSP-PR (pitched roof), MSP-TT (metal roof) and MSP-FR (flat roof)

* For pilot plants

Expected to be available from autumn 2024

Rook hook for pitched roofs

Practical solution for tiled roofs and snow load zones



MSP-PR-RHM

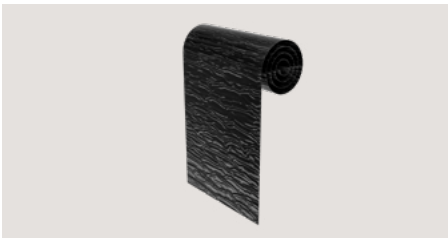
Advantages at a glance

- Simple installation
- Fewer hooks required for each roof
- For all tiled roofs and snow load zones
- Combined vertical and horizontal function

Expected to be available from August/September 2024

End skirts

for the PV in-roof system Solrif



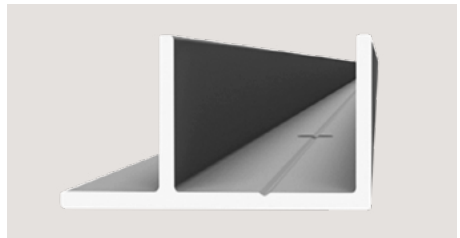
Advantages at a glance

- New 300 and 450 mm versions
- 5 m rolls
- Red and black colour variants

Expected to be available from August 2024

Eave profile

for PV in-roof system Solrif



Advantages at a glance

- Profile clips no longer required
- Easier handling
- Reduced workload
- Optimised surface colouring
- Black colour variant

Find out more:

ernstschweizer.com/msp



Find out more:

ernstschweizer.com/solrif



