

(1) CERTIFICATE

- (2) No. of the Certificate: **ZP/B058/25-PZ**
- (3) Product: **Anchor device type D and E**
Type: ABS AluTrax-Ernst Schweizer
- (4) Manufacturer: **ABS Safety GmbH**
- (5) Address: **Gewerbering 3, 47623 Kevelaer, GERMANY**
- (6) The design of this product and any acceptable variation thereto are specified in the appendix to this certificate.
- (7) The Certification Body of DEKRA Testing and Certification GmbH certifies that this product complies with the requirements of the test regulations listed under item 8 below. The test results are recorded in report PB 25-051.
- (8) The requirements are assured by compliance with
DIN EN 795:2012
- (9) This certificate relates only to the design and tests of the specified product in accordance to the contemplated requirements. Further requirements applied to the manufacturing process and supply of this product, are not covered by this certificate.
- (10) The manufacturer is authorised to apply the mark of conformity to the products that conform to the types examined.
- (11) This certificate is valid until 2030-04-29.

DEKRA Testing and Certification GmbH
Bochum, 2025-04-30

Signed: Brumm
Managing director

We confirm the correctness of the translation from the German original.
In the case of arbitration only the German wording shall be valid and binding.



Managing director



TRANSLATION

- (12) Appendix to
- (13) **Certificate**
ZP/B058/25-PZ
- (14) 14.1 Subject and type
Anchor device type D and E
Type: ABS AluTrax-Ernst Schweizer

14.2 Description

The anchor device type: ABS AluTrax-Ernst Schweizer (Fig. 1) is used to secure one person against falling. An aluminum profile with a width of 30 mm is used as a rail (Fig. 2). A curve (Fig. 3) can be installed to bypass corners of buildings. The mobile anchor point, type: ABS AluTrax Roll, is placed on the guide (Fig. 8). The user can secure himself against falling at the mobile anchor point with the personal protective equipment he is carrying.

The system is installed horizontally on the substructure of the solar panels using the U-profiles, brackets, rail holders, and rail connectors provided (Fig. 4 to Fig. 7). The maximum field length, i.e. the distance between two brackets, is 2.4 m. The end bracket is positioned directly at the end of the guide. The ends of the rigid guide are secured against unintentional overrunning by a firmly bolted end stop (Fig. 9). The end stop can be opened to allow the mobile anchor point to be placed on or removed from the fixed guide. The anchorage device is made of corrosion-resistant material.

System size and ballasting

The system weight including ballasting is at least 812 kg, consisting of at least eight solar panels.



Fig. 1: Anchor device, type: ABS AluTrax-Ernst Schweizer

TRANSLATION



Fig. 2: Rail



Fig. 3: Curve

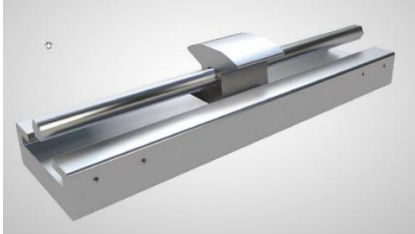


Fig. 4: Rail connector

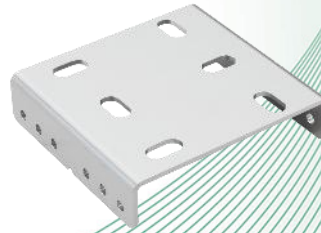


Fig. 5: U-Profile



Fig. 6: Bracket

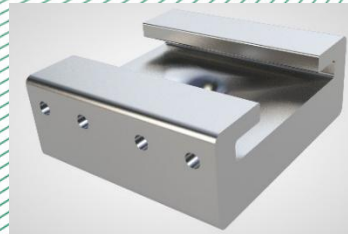


Fig. 7: Rail holder



Fig. 8: Mobile anchor point,
Type: ABS AluTrax Roll



Fig. 9: End stop

(15) Report

PB 25-051, 2025-04-30