

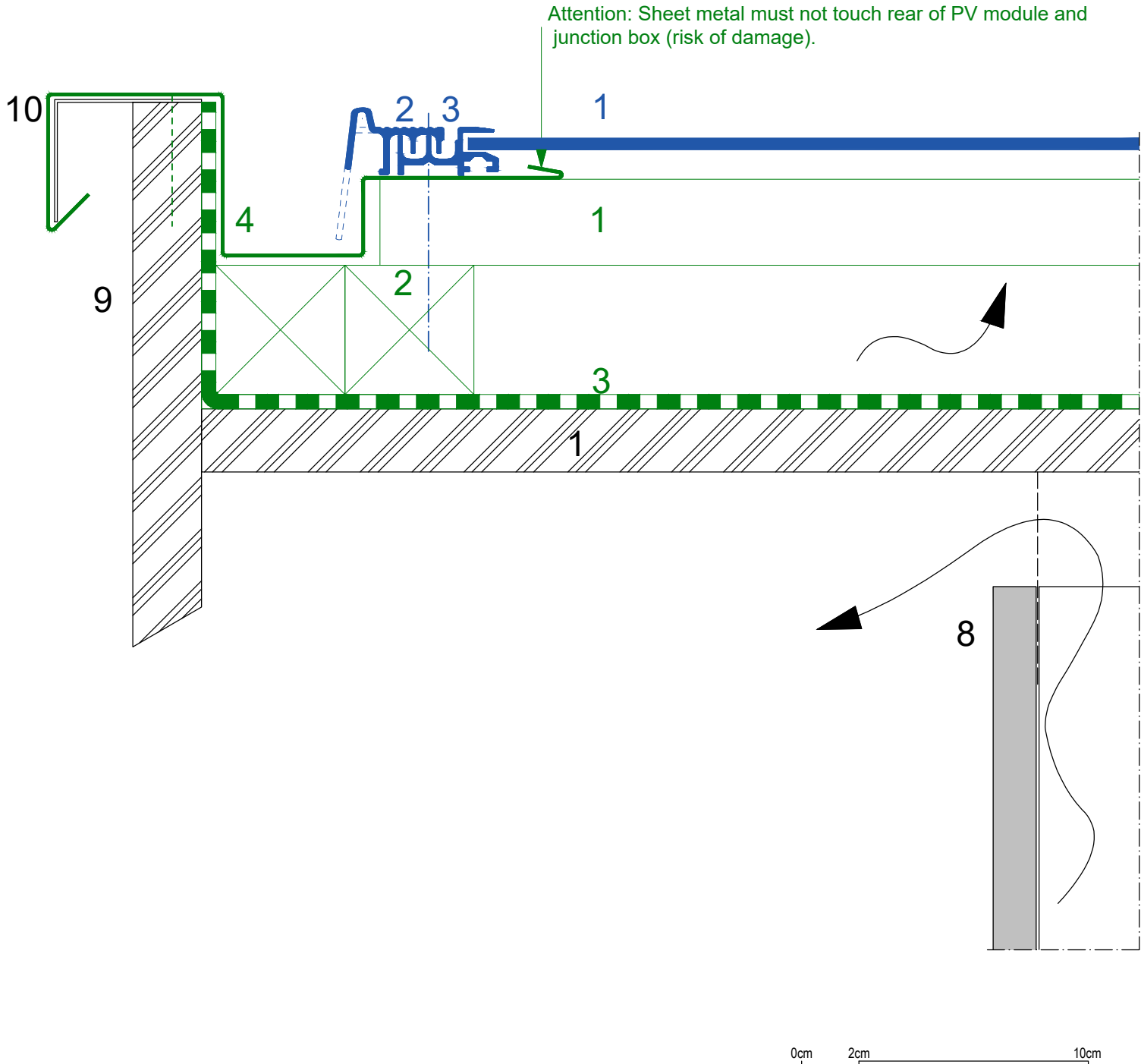
Complete BIPV roof data inventory with Solrif

Verge detail

Barge board cover with box gutter

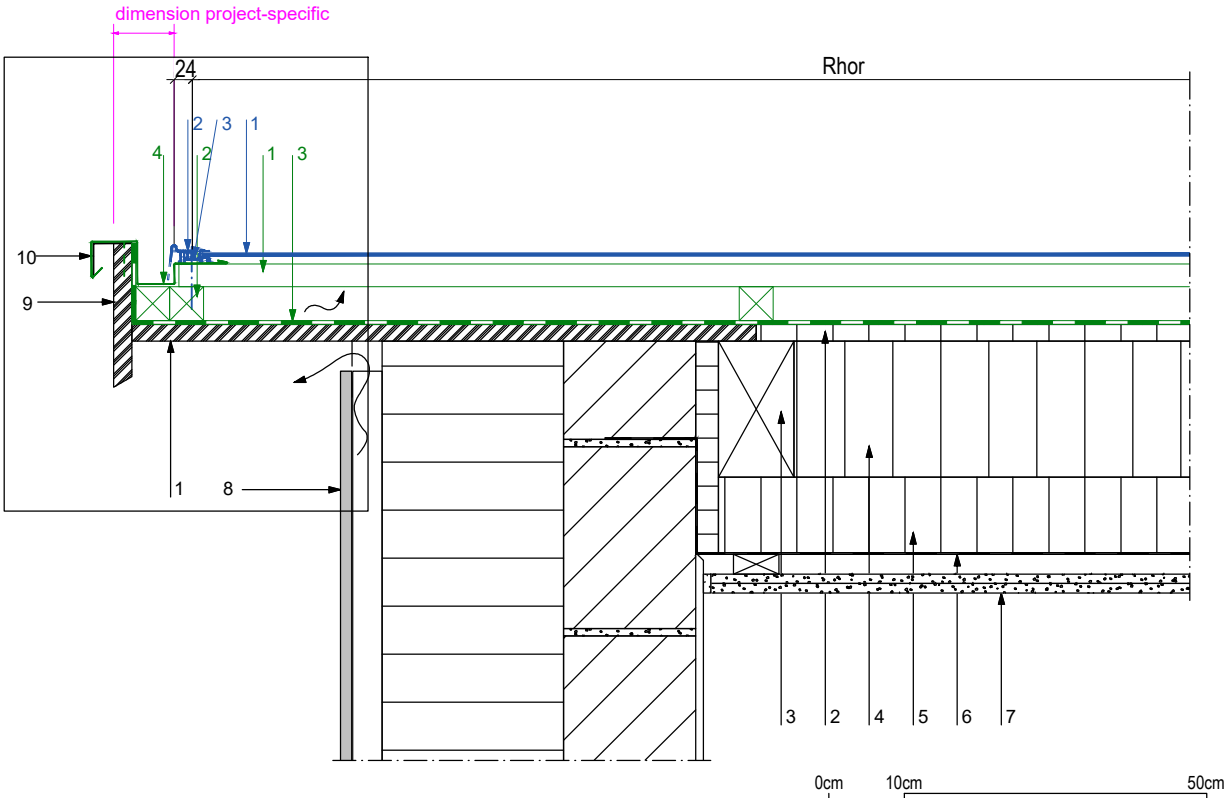


Detail section 1:2



Detail 1:10

Detail section



Key

Solrif range:

- 1 Solrif module
- 2 Standard edge profile or with side length 40 mm
- 3 Mounting bracket screwed into counter batten, fasten with extra-long screws

Technical system elements:

- 1 Solrif batten screwed into wood, min. 120 x 30 mm; strength class C24 in accordance with EN 338
- 2 Counter batten (in accordance with guidelines) / ventilation space
- 3 Underroof (depending on roof pitch, in accordance with guidelines) Temperature resistance of film at least 80°C
- 4 Barge board cover with box gutter

Construction / components:

- 1 Underside panelling
- 2 Soft wood fibreboard
- 3 Rafter layer
- 4 Thermal insulation between rafters
- 5 Thermal insulation under rafters
- 6 Vapour barrier
- 7 Inner panelling
- 8 Ventilated exterior wall construction
- 9 Barge board
- 10 Barge board cover

Applicability notice for structural connections for Solrif complete roof solutions © Ernst Schweizer AG.
This structural depiction serves as an implementation concept and as a recommendation for safe realisation. Images are illustrative and may differ from actual components.
Because of national construction specifications and regional practices, these should be checked on a project-specific basis and adapted if necessary. Please refer to the SIA 232/1 standard for Switzerland, the ZVDH rules for Germany and ÖNROM B 4119:2018 03 Planning and execution of underroof constructions and underlays for Austria. Otherwise, the General Terms and Conditions of Ernst Schweizer AG (www.ernstschweizer.ch/agb) apply.



Ernst Schweizer AG
Bahnhofplatz 11
8908 Hedingen, Schweiz

Phone +41 44 763 61 11
solar@ernstschweizer.ch
www.ernstschweizer.ch

Subject to technical changes
May 2024
© Ernst Schweizer AG

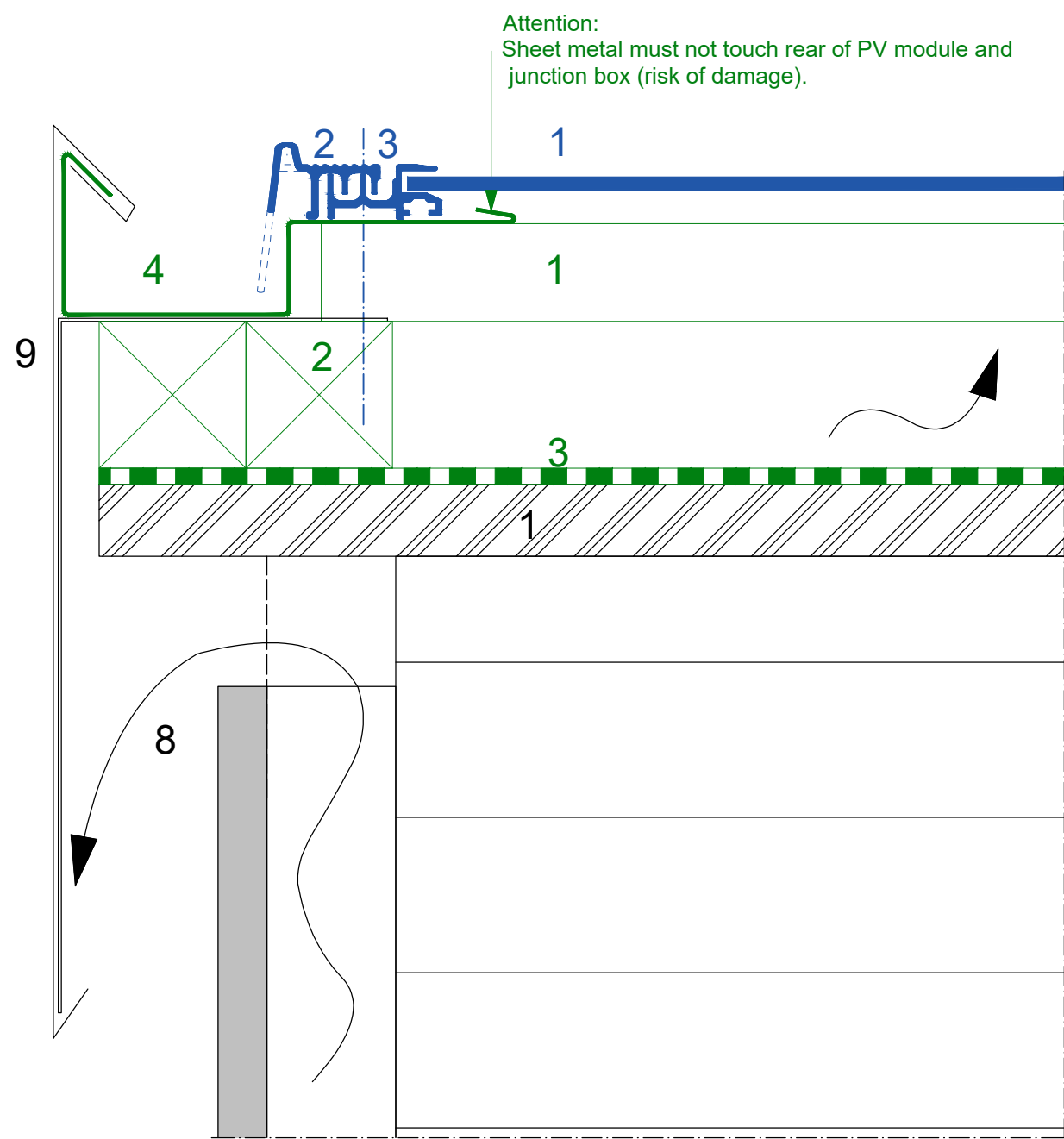
Complete BIPV roof data inventory with Solrif

Verge detail

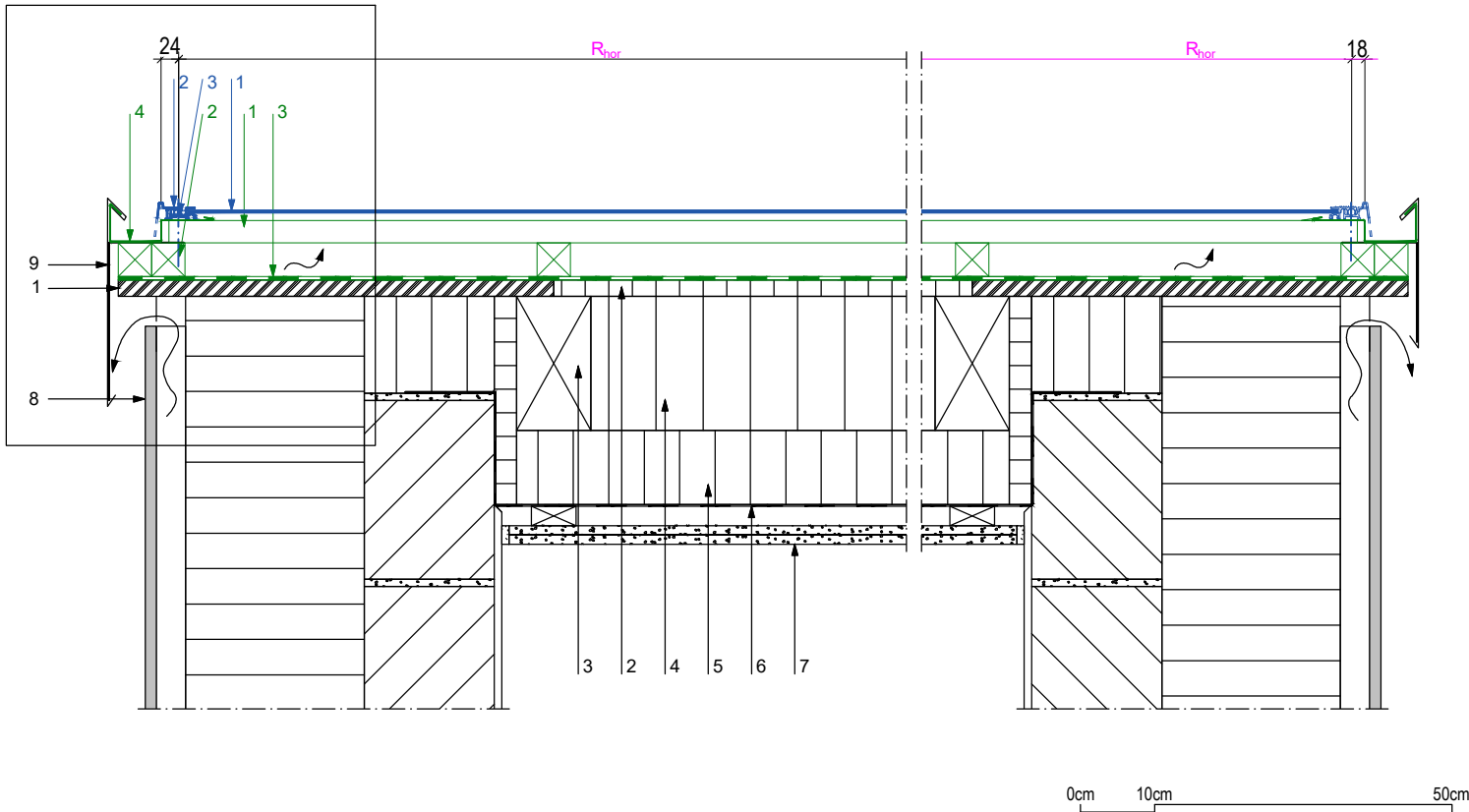
Flush with façade – side flashing with gutter with barge board coverl



Detail section 1:2



Detail section



Detail 1:10

Key

Solrif range:

- 1 Solrif module
- 2 Standard edge profile or with side length 40 mm
- 3 Mounting bracket screwed into counter batten, fasten with extra-long screws

Technical system elements:

- 1 Solrif batten screwed into wood, min. 120 x 30 mm; strength class C24 in accordance with EN 338
- 2 Counter batten (in accordance with guidelines) / ventilation space
- 3 Underroof (depending on roof pitch, in accordance with guidelines) Temperature resistance of film at least 80°C
- 4 Barge board cover with box gutter

Construction / components:

- 1 Underside panelling
- 2 Soft wood fibreboard
- 3 Rafter layer
- 4 Thermal insulation between rafters
- 5 Thermal insulation under rafters
- 6 Vapour barrier
- 7 Inner panelling
- 8 Ventilated exterior wall construction
- 9 Barge board
- 10 Barge board cover

Applicability notice for structural connections for Solrif complete roof solutions © Ernst Schweizer AG.
This structural depiction serves as an implementation concept and as a recommendation for safe realisation. Images are illustrative and may differ from actual components.
Because of national construction specifications and regional practices, these should be checked on a project-specific basis and adapted if necessary. Please refer to the SIA 232/1 standard for Switzerland, the ZVDH rules for Germany and ÖNROM B 4119:2018 03 Planning and execution of underroof constructions and underlays for Austria. Otherwise, the General Terms and Conditions of Ernst Schweizer AG (www.ernstschweizer.ch/agb) apply.



Ernst Schweizer AG
Bahnhofplatz 11
8908 Hedingen, Schweiz

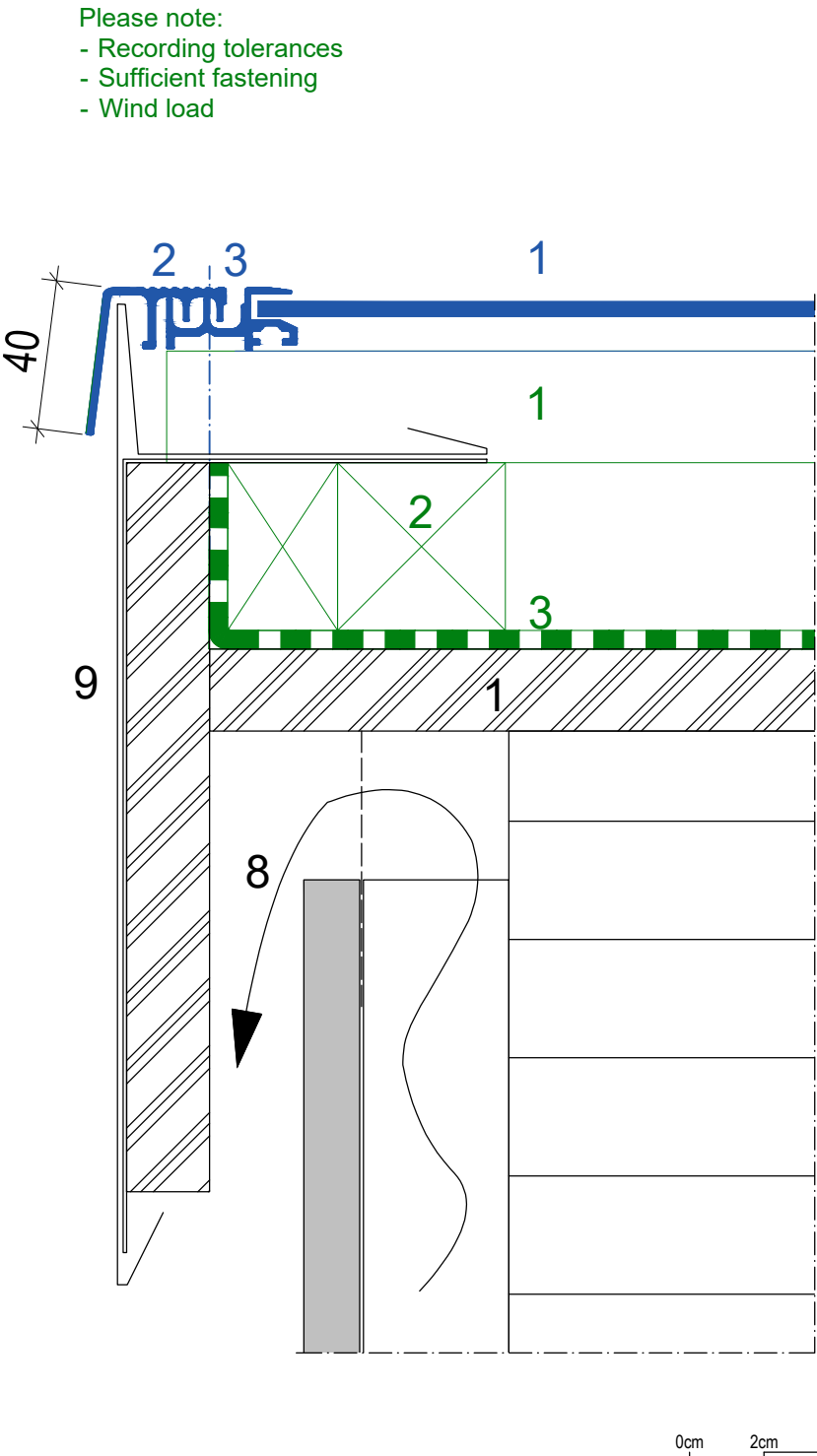
Phone +41 44 763 61 11
solar@ernstschweizer.ch
www.ernstschweizer.ch

Subject to technical changes
May 2024
© Ernst Schweizer AG

Complete BIPV roof data inventory with Solrif
Verge detail
Canopy -Barge board with recessed gutter

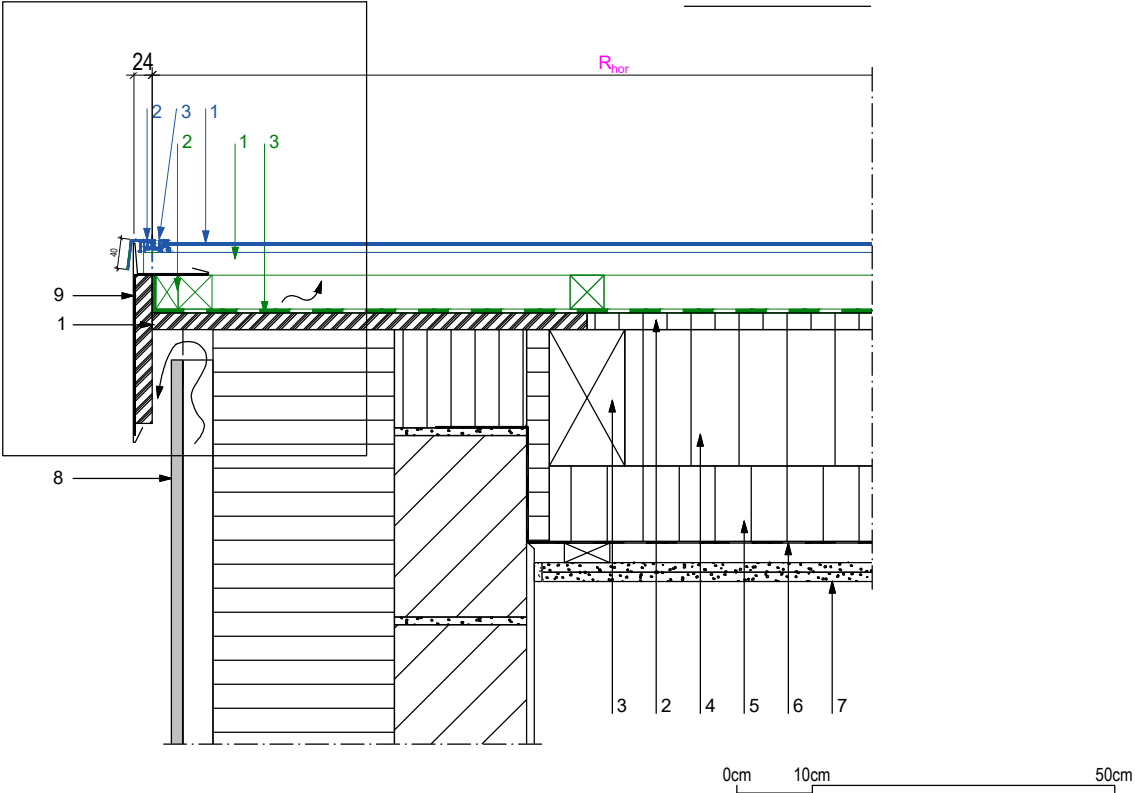


Detail section 1:2



Detail section

Detail 1:10



Key

Solrif range:

- 1 Solrif module
- 2 Edge profile, 40 mm
- 3 Mounting bracket screwed into counter batten, fasten with extra-long screws

Technical system elements:

- 1 Solrif batten screwed into wood, min. 120 x 30 mm; strength class C24 in accordance with EN 338
- 2 Counter batten (in accordance with guidelines) / ventilation space
- 3 Underroof (depending on roof pitch, in accordance with guidelines) Temperature resistance of film at least 80°C

Construction / components:

- 1 Underside panelling
- 2 Soft wood fibreboard
- 3 Rafter layer
- 4 Thermal insulation between rafters
- 5 Thermal insulation under rafters
- 6 Vapour barrier
- 7 Inner panelling
- 8 Ventilated exterior wall construction
- 9 Barge board cover

Applicability notice for structural connections for Solrif complete roof solutions © Ernst Schweizer AG.
This structural depiction serves as an implementation concept and as a recommendation for safe realisation. Images are illustrative and may differ from actual components.
Because of national construction specifications and regional practices, these should be checked on a project-specific basis and adapted if necessary. Please refer to the SIA 232/1 standard for Switzerland, the ZVDH rules for Germany and ÖNROM B 4119:2018 03 Planning and execution of underroof constructions and underlays for Austria. Otherwise, the General Terms and Conditions of Ernst Schweizer AG (www.ernstschweizer.ch/agb) apply.



Ernst Schweizer AG
Bahnhofplatz 11
8908 Hedingen, Schweiz

Phone +41 44 763 61 11
solar@ernstschweizer.ch
www.ernstschweizer.ch

Subject to technical changes
May 2024
© Ernst Schweizer AG