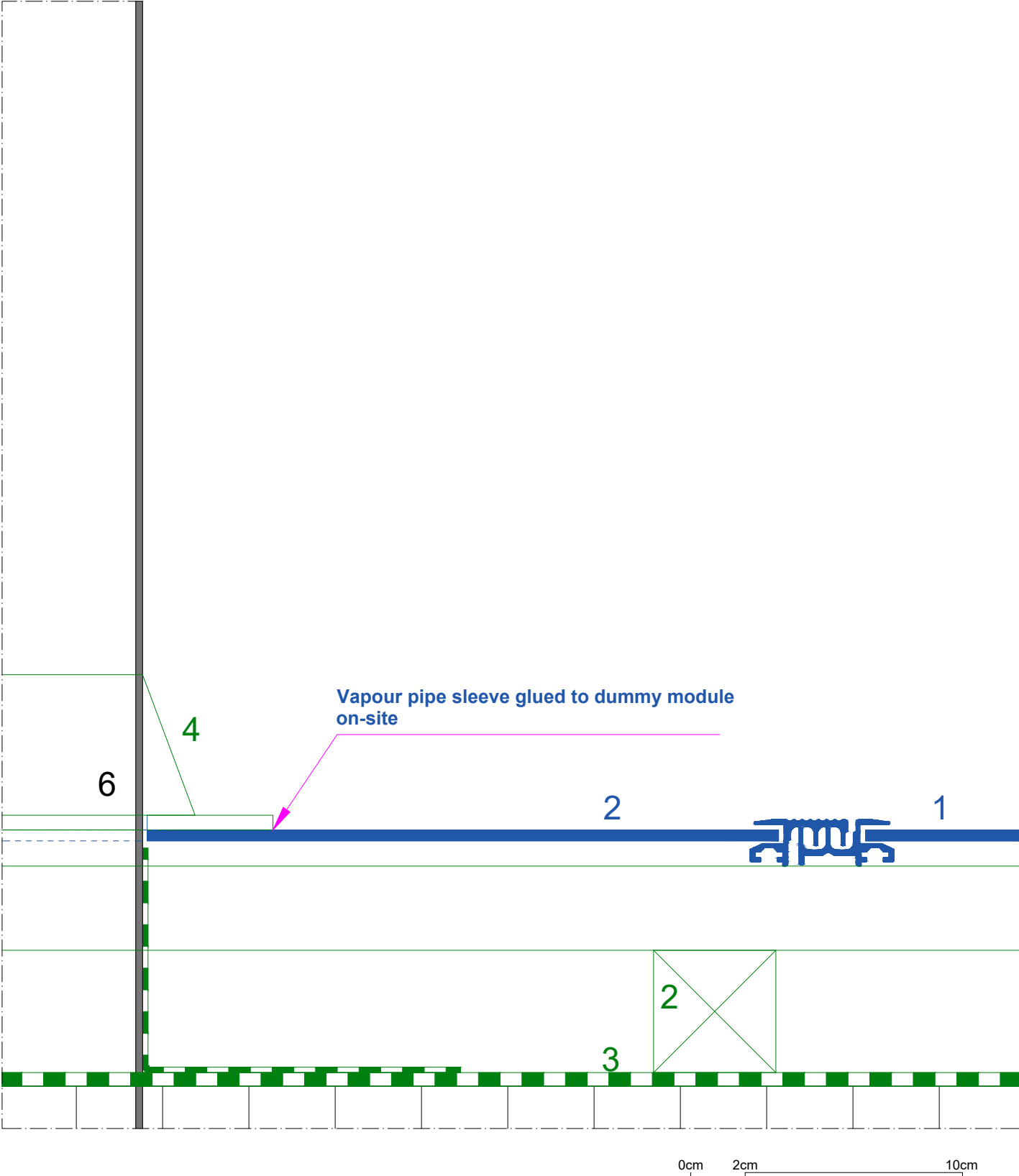


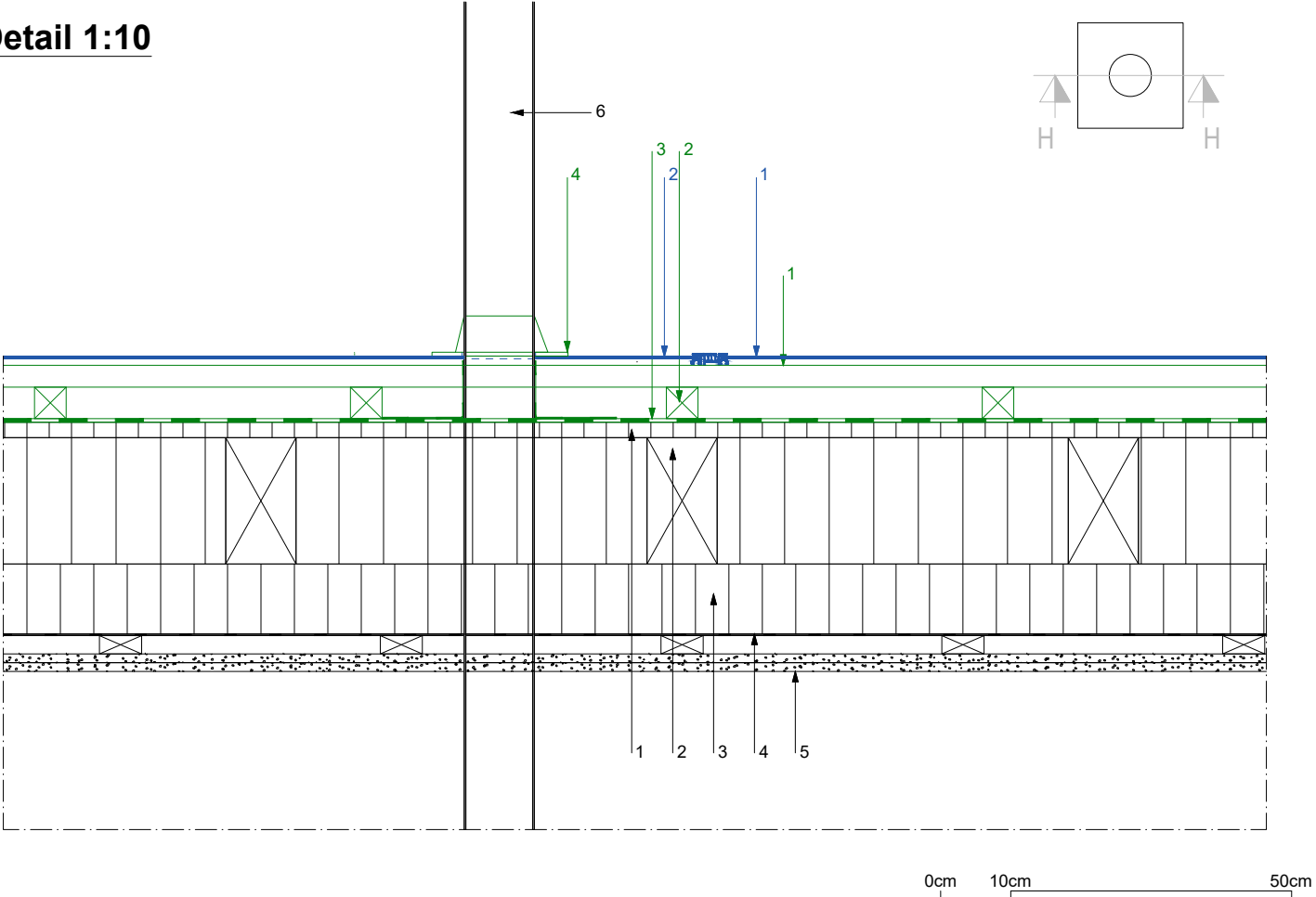
Complete BIPV roof data inventory with Solrif
Vertical connection detail
Extractor pipe - horizontal section with sleeve



Detail 1:2



Detail 1:10



Key

Solrif range:

- 1 Solrif module or dummy module
- 2 Solrif dummy module with penetration

Technical system elements:

- 1 Solrif batten screwed into wood, min. 120 x 30 mm; strength class C24 in accordance with EN 338
- 2 Counter batten (in accordance with guidelines) / ventilation space
- 3 Underroof (depending on roof pitch, in accordance with guidelines) Temperature resistance of film at least 80°C
- 4 Sleeve

Construction / components:

- 1 Soft wood fibreboard
- 2 Rafters / Thermal insulation between rafters
- 3 Thermal insulation under rafters
- 4 Vapour barrier (airtight connection to vapour pipe)
- 5 Inner panelling
- 6 Vapour pipe

Applicability notice for structural connections for Solrif complete roof solutions © Ernst Schweizer AG.
This structural depiction serves as an implementation concept and as a recommendation for safe realisation. Images are illustrative and may differ from actual components.
Because of national construction specifications and regional practices, these should be checked on a project-specific basis and adapted if necessary. Please refer to the SIA 232/1 standard for Switzerland, the ZVDH rules for Germany and ÖNROM B 4119:2018 03 Planning and execution of underroof constructions and underlays for Austria. Otherwise, the General Terms and Conditions of Ernst Schweizer AG (www.ernstschweizer.ch/agb) apply.



Ernst Schweizer AG
Bahnhofplatz 11
8908 Hedingen, Schweiz

Phone +41 44 763 61 11
solar@ernstschweizer.ch
www.ernstschweizer.ch

Subject to technical changes
June 2025
© Ernst Schweizer AG

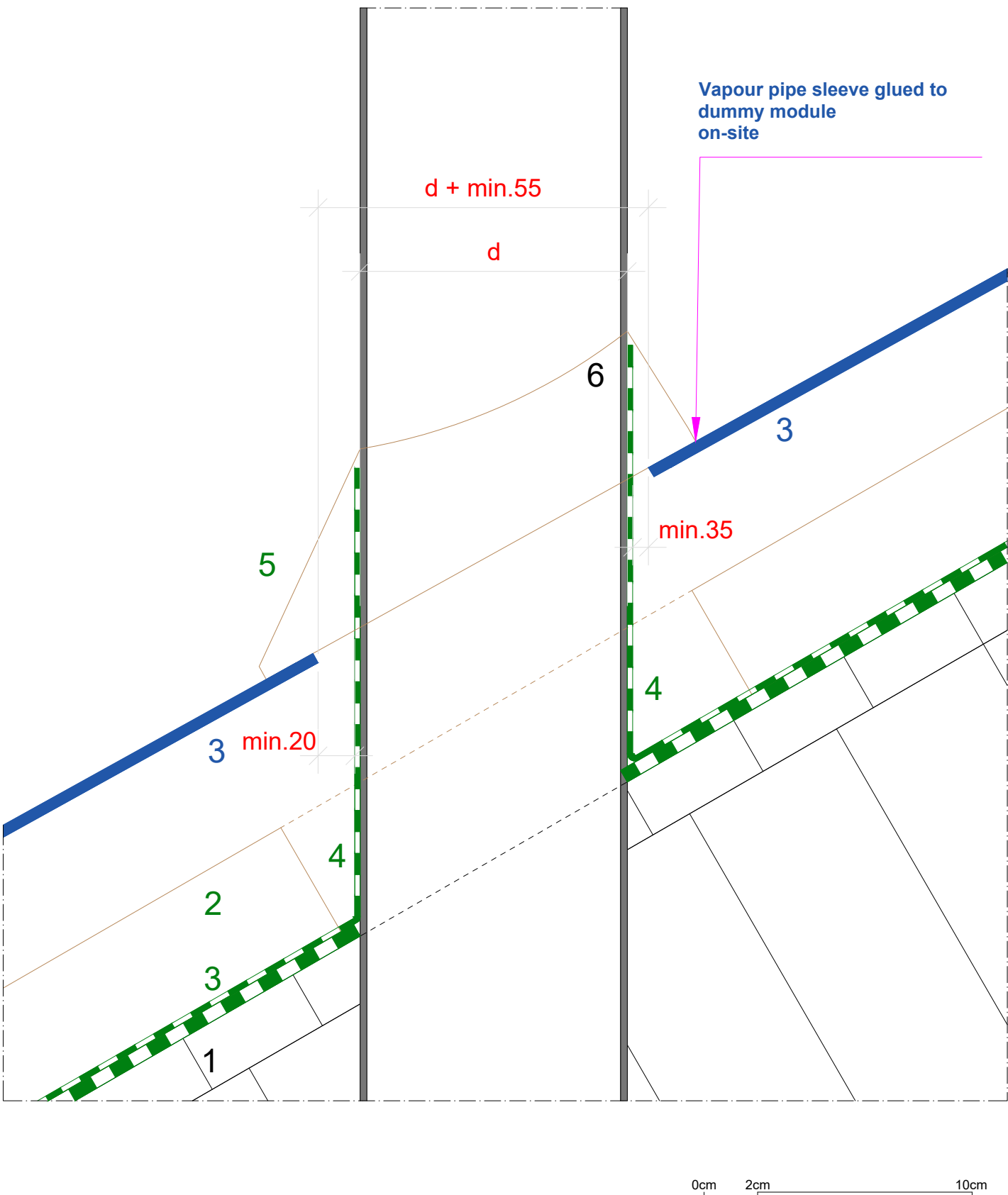
Complete BIPV roof data inventory with Solrif

Vertical connection detail

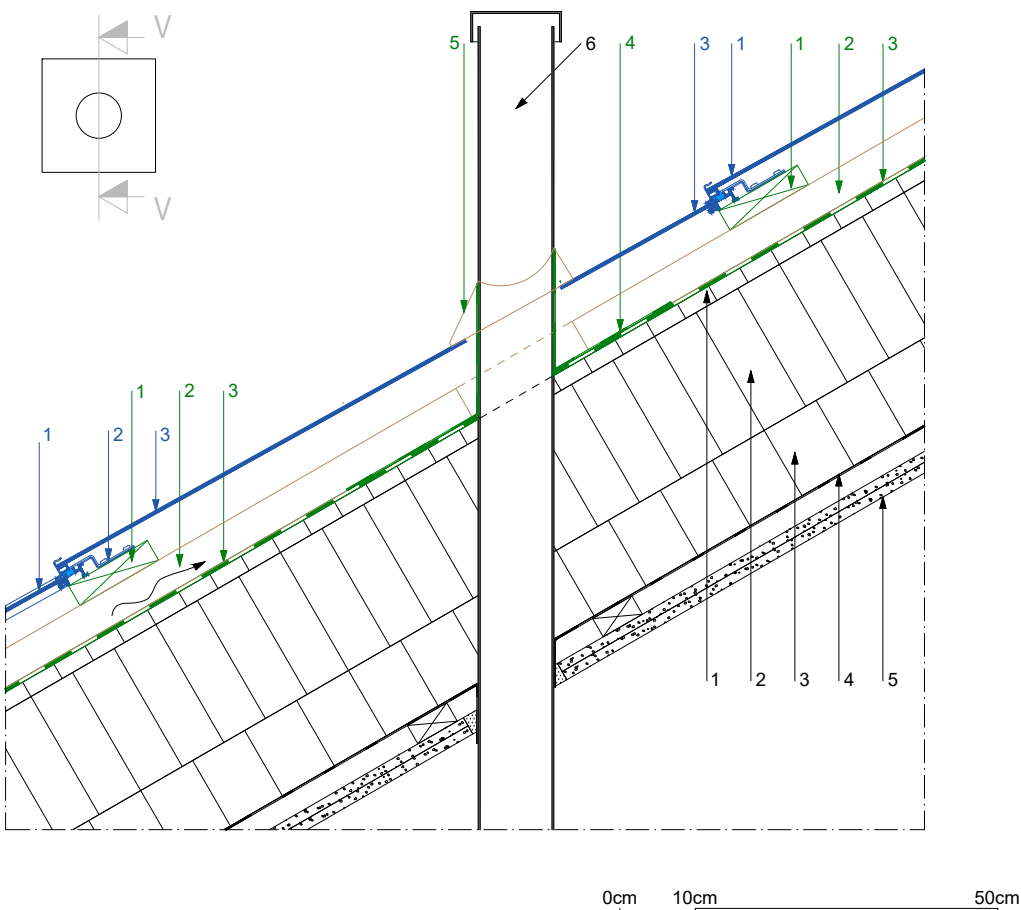
Extractor pipe - vertical section with sleeve



Detail 1:2



Detail 1:10



Key

- Solrif range:**
- 1 Solrif module or dummy module
 - 2 Profile mounting bracket
 - 3 Solrif dummy module with penetration

- Technical system elements:**
- 1 Solrif batten screwed into wood, min. 120 x 30 mm; strength class C24 in accordance with EN 338
 - 2 Counter batten (in accordance with guidelines) / ventilation space
 - 3 Underroof (depending on roof pitch, in accordance with guidelines) Temperature resistance of film at least 80°C
 - 4 Connect underroof membrane to vapour pipe
 - 4 Sleeve

- Construction / components:**
- 1 Soft wood fibreboard
 - 2 Rafters / Thermal insulation between rafters
 - 3 Thermal insulation under rafters
 - 4 Vapour barrier (airtight connection to vapour pipe)
 - 5 Inner panelling
 - 6 Vapour pipe

Applicability notice for structural connections for Solrif complete roof solutions © Ernst Schweizer AG.
This structural depiction serves as an implementation concept and as a recommendation for safe realisation. Images are illustrative and may differ from actual components.
Because of national construction specifications and regional practices, these should be checked on a project-specific basis and adapted if necessary. Please refer to the SIA 232/1 standard for Switzerland, the ZVDH rules for Germany and ÖNROM B 4119:2018 03 Planning and execution of underroof constructions and underlays for Austria. Otherwise, the General Terms and Conditions of Ernst Schweizer AG (www.ernstschweizer.ch/agb) apply.



Ernst Schweizer AG
Bahnhofplatz 11
8908 Hedingen, Schweiz

Phone +41 44 763 61 11
solar@ernstschweizer.ch
www.ernstschweizer.ch

Subject to technical changes
June 2025
© Ernst Schweizer AG