

Schweizer

Maximising benefits, maintaining strengths

MSP PV installation system upgrade



MSP

Upgrade

High support SH90

Minimised risk,
maximised operational
reliability



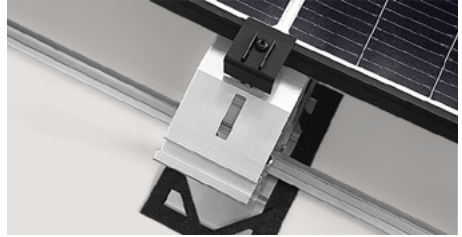
The new SH90 high support is the central component of our MSP upgrade. It was developed to maximise the cost-effectiveness of flat roof systems and enables direct integration of the new cable management, maximising time savings during installation. The widening of the ridge joint improves both aerodynamics and the stability of the support. Thanks to the increased structural height, the inclination of the modules is 10°, even with today's standard module widths of 1134 mm.

Your added value at a glance

- **Time-saving and flexible cable management:** direct integration of cable routing, for all system sizes.
- **Greater safety thanks to reduced wind loads:** improved aerodynamics due to lower negative pressure, thanks to the 90-mm ridge joint.
- **Requirements from tenders are covered:** modules with today's standard width (up to 1134 mm) can be mounted at an ideal inclination.

High centre support SMH90

Our answer to the trend
towards large modules



The trend towards larger or longer PV modules brings with it new challenges in terms of bending strength and load-bearing capacity. The SMH90 centre support is Schweizer's clever answer to absorbing high loads caused by wind and snow. The modules are now attached using the standard end clamp. As well as being an additional component, the centre support also guarantees the longevity and maximum yield of high-performance PV systems with large modules.

Your added value at a glance

- **Increased system and module safety:** absorbs bending forces that occur due to longer modules and extreme weather conditions.
- **Even load distribution and targeted strengthening** at the weakest point of the module.
- **Full flexibility** thanks to compatibility with the existing system: fits seamlessly into the existing MSP FR east-west and green flat roof systems.

Cable management

Sophisticated cable management for every system size



The basis of every durable and efficient flat-roof photovoltaic system is a reliable cable management. The new mounting range from Schweizer significantly reduces assembly time and costs, while simultaneously enhancing operational reliability of the PV system. Schweizer provides suitable, value-orientated solutions for every project, from small systems to megawatt projects.

Your added value at a glance

- **Fastening ties:** the tried-and-tested solution from the Schweizer range. Ease of handling and an attractive price.
- **Cable holder clip:** quick and easy installation solution, thanks to a tool-free clip system.
- **Connecting rail clip:** robust fastening for cable ducts and channels, providing maximum flexibility for even complex large-scale projects.

Optimiser clamp

Maximum flexibility and easy handling



Simple clamping instead of screwing: the new, tool-free optimiser clamps eliminate the tedious assembly of small parts and the risk of drilling debris on the roof. They are simply clamped to the module supports – and installation is completed! This is quick and safe and enables uncomplicated installation. And if the optimiser needs to be replaced, it can be achieved in the twinkling of an eye.

Your added value at a glance

- **Reduction in assembly time:** minimum installation effort, thanks to tool-free assembly.
- **Safety and protection of roof cladding** thanks to click installation instead of drilling – no drilling debris is produced.
- **Maintenance-friendly and tool-free:** optimisers can be fitted without tools and defective examples replaced extremely quickly.

Ballast fixation

Ballasting redefined – speedy and safe



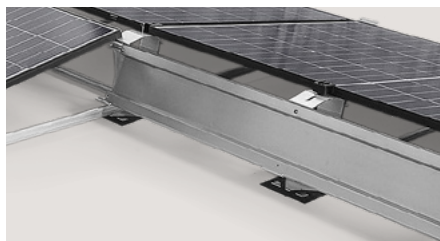
For exposed locations, ballast fixation guarantees maximum safety, with ballast blocks in longitudinal and transverse direction. Laying is achieved without tools. Thanks to the flexibly positionable and pre-punched tabs, ballast blocks can be fixed precisely and without gaps, perfectly in line with the calculated ballast volume.

Your added value at a glance

- **Quick, tool-free assembly:** no time-consuming attachment of additional brackets.
- **Guaranteed stability** thanks to permanent securing of ballast blocks against lateral slippage due to wind loads.
- **Precise longitudinal fixation:** ballast blocks are secured against slipping in the longitudinal direction by pre-punched tabs.

Wind deflectors and adapters

Assembly time reduced, safety maximised



This wind deflector is a commitment to simplicity through a reasoned solution: the click adapter and a reduction to just two screw connections mean valuable time can be saved on the roof. Consequently, half gables or entire rows of gables can be realised, allowing roof areas to be optimally utilised. This is an enormous advantage, especially for roofs with interfering surfaces, as it reduces assembly time and complexity, enhancing the cost-effectiveness of the PV system. The customised SPT planning tool provides ideal support for conception and design.

Your added value at a glance

- **Material and labour savings** through a reduced number of fixing points.
- **Full compatibility** with system parts already in use.
- **Easy and reliable planning** of systems with the SPT planning tool.

Taking the proven system to the next level



Sophisticated innovation arises where real needs are analysed and addressed through technical expertise.

The MSP upgrade represents a targeted, modular further development of the tried-and-tested installation system. New supports offer maximum structural stability. The dynamic ballast fixation guarantees continuous securing of the ballast blocks. A tool-free integration of cable management and optimisers ensures maximum operational reliability.



Find out more:
www.ernstschweizer.com/en/msp-upgrade



Well advised with service from Schweizer

In addition to the leading system for flat roof systems, Schweizer also provides professional advice and rapid support, both for the entire duration of the project and on to its successful conclusion.

Local and tool-supported consultation ensures a high degree of planning and project quality from the outset. This enables us to strengthen the market position of our partners and enhance their customer loyalty.



Lightweight construction
For almost every roof



Efficient assembly
Thanks to a modular system



Swiss quality
Durable, robust, reliable
and economical



Flexible implementation
Standard supporting structure
for every type of flat roof



Leading system
Established and innovative
solution



Uncomplicated planning
With Solar.Pro.Tool
from Schweizer

Planning made easy – with Solar.Pro.Tool

The web-based Solar.Pro.Tool software enables rapid and uncomplicated planning of PV systems for all installation kits from Schweizer.

The tool can be operated intuitively and in any location. Project data can be accessed online by several users and saved following processing. The documentation contains all necessary technical details, such as the design of the PV generator, parts lists, plans and installation instructions.

