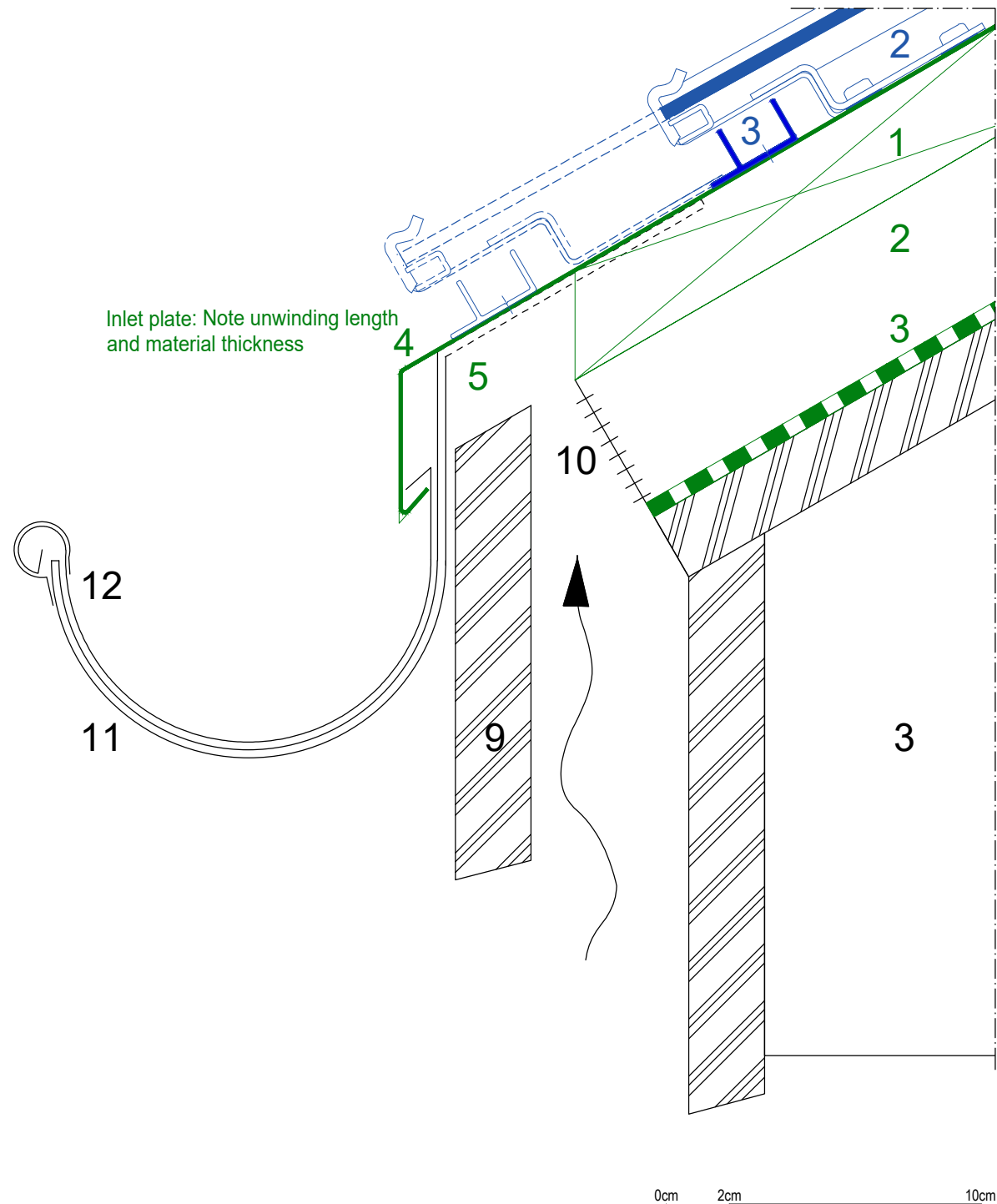


# Complete BIPV roof data inventory with Solrif

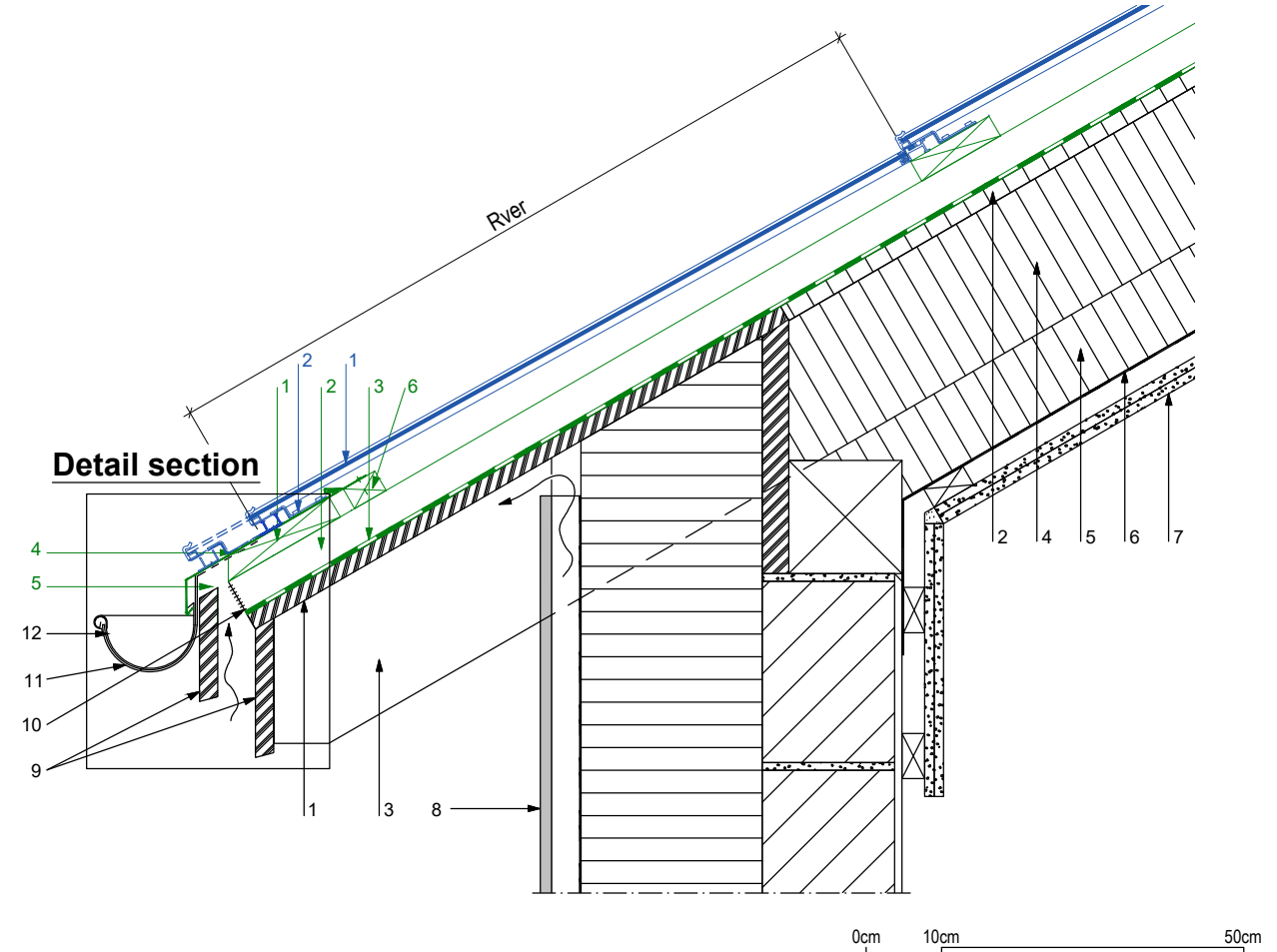
## Eave detail

Ventilation opening above gutter -  
water running off underroof drained into channel

**Detail section 1:2**



**Detail 1:10**



**Key**

**Solrif range:**

- 1 Solrif module
- 2 Glass mounting bracket, with screw seal
- 3 Eave profile

**Technical system elements:**

- 1 Solrif batten screwed into wood, min. 120 x 30 mm; strength class C24 in accordance with EN 338
- 2 Counter batten (in accordance with guidelines) / ventilation space
- 3 Underroof (depending on roof pitch, in accordance with guidelines) Temperature resistance of film at least 80°C
- 4 Inlet plate, with perforated centre strip (directly ventilated) (cut-out in bracket area of snow guard profile)
- 5 Retaining plate, partially in front of counter batten
- 6 Eave shutter
- 7 Square timber

**Construction / components:**

- 1 Underside panelling
- 2 Soft wood fibreboard
- 3 Rafter layer
- 4 Thermal insulation between rafters
- 5 Thermal insulation under rafters
- 6 Vapour barrier
- 7 Inner panelling
- 8 Ventilated exterior wall construction
- 9 Fascia board
- 10 Gutter
- 11 Gutter hook
- 12 Inlet plate attached with adhesive

Applicability notice for structural connections for Solrif complete roof solutions © Ernst Schweizer AG.

This structural depiction serves as an implementation concept and as a recommendation for safe realisation. Images are illustrative and may differ from actual components.

Because of national construction specifications and regional practices, these should be checked on a project-specific basis and adapted if necessary. Please refer to the SIA 232/1 standard for Switzerland, the ZVDH rules for Germany and ÖNROM B 4119:2018 03 Planning and execution of underroof constructions and underlays for Austria. Otherwise, the General Terms and Conditions of Ernst Schweizer AG ([www.ernstschweizer.ch/agnb](http://www.ernstschweizer.ch/agnb)) apply.

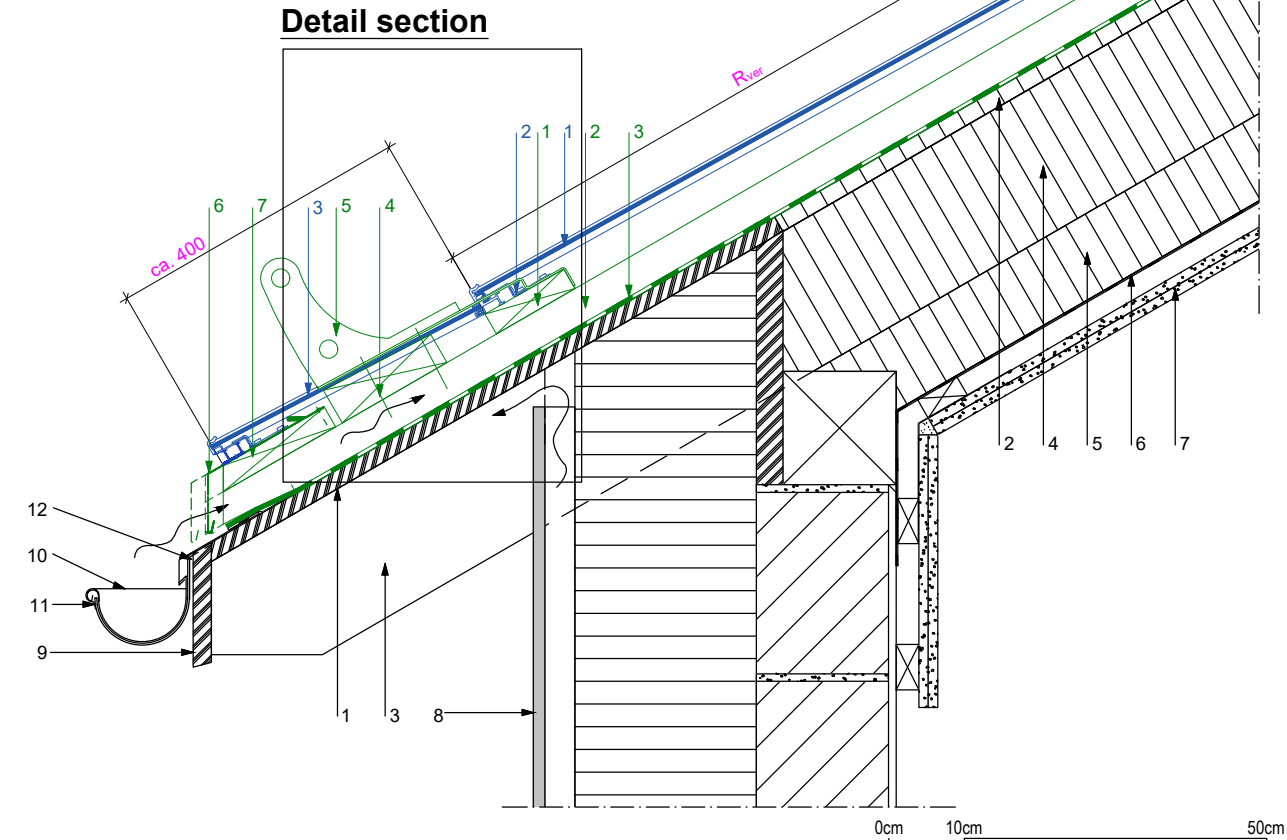
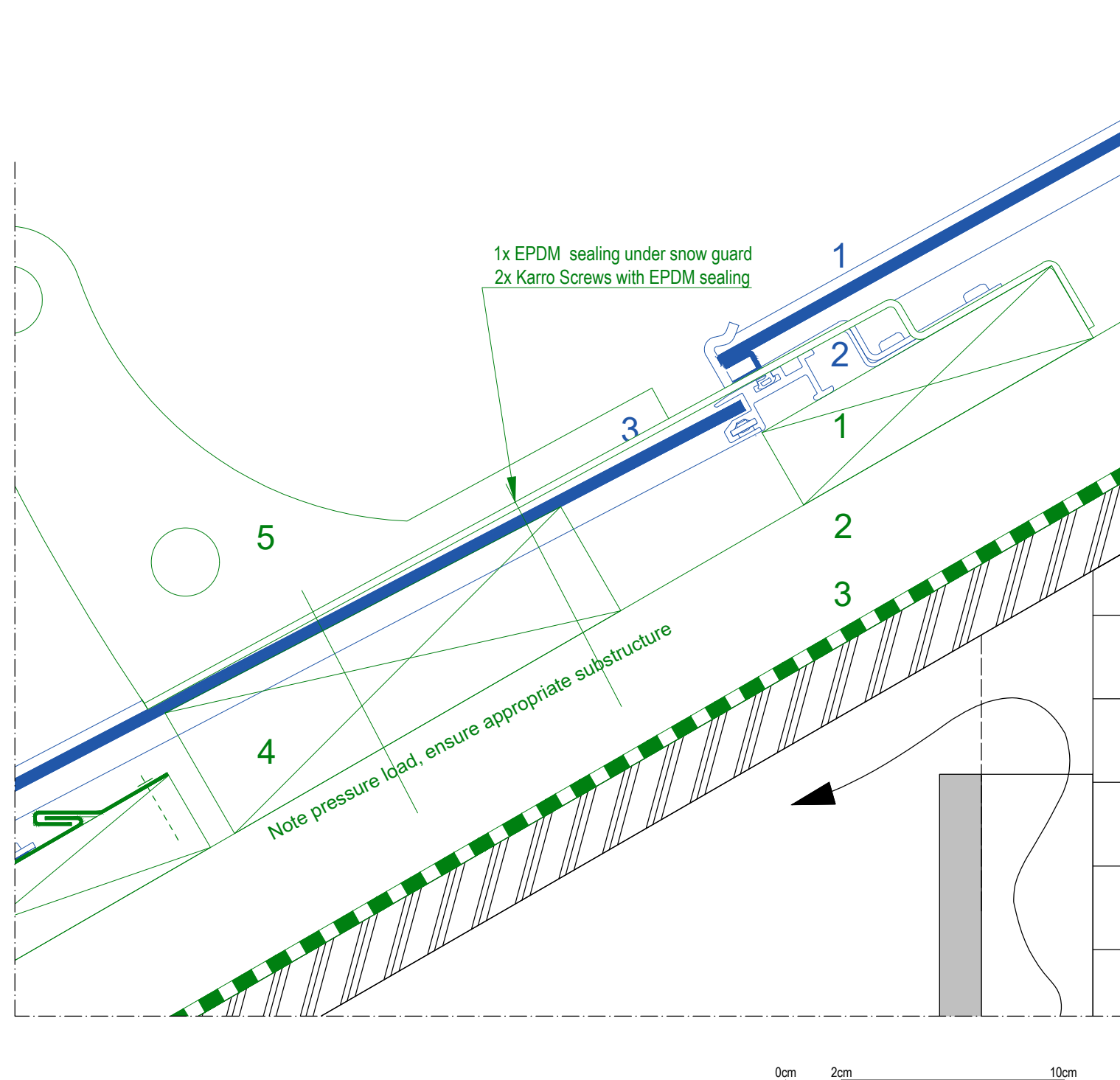
# Complete BIPV roof data inventory with Solrif

## Eave detail

### With snow guard on blind module

Detail 1:10

Detail section 1:2



**Key**

**Solrif range:**

- 1 Solrif module
- 2 Glass mounting bracket
- 3 Solrif dummy module, 4 mm aluminium sheet, stove enamelled
- 4 Eave profile

**Technical system elements:**

- 1 Solrif batten screwed into wood, min. 120 x 30 mm; strength class C24 in accordance with EN 338
- 2 Counter batten (in accordance with guidelines) / ventilation space
- 3 Underroof (depending on roof pitch, in accordance with guidelines) Temperature resistance of film at least 80°C
- 4 Wooden wedge in snow guard profile area (wedge-shaped cut)
- 5 Solrif in-roof snow guard support from Glaromat
- 6 Inlet plate with perforated centre strip (directly ventilated), fixed with adhesive
- 7 Eave shutter

**Construction / components:**

- 1 Underside panelling
- 2 Soft wood fibreboard
- 3 Rafter layer
- 4 Thermal insulation between rafters
- 5 Thermal insulation under rafters
- 6 Vapour barrier
- 7 Inner panelling
- 8 Ventilated exterior wall construction
- 9 Fascia board
- 10 Gutter
- 11 Gutter hook
- 12 Inlet plate attached with adhesive

Applicability notice for structural connections for Solrif complete roof solutions © Ernst Schweizer AG.

This structural depiction serves as an implementation concept and as a recommendation for safe realisation. Images are illustrative and may differ from actual components.

Because of national construction specifications and regional practices, these should be checked on a project-specific basis and adapted if necessary. Please refer to the SIA 232/1 standard for Switzerland, the ZVDH rules for Germany and ÖNROM B 4119:2018 03 Planning and execution of underroof constructions and underlays for Austria. Otherwise, the General Terms and Conditions of Ernst Schweizer AG ([www.ernstschweizer.ch/agb](http://www.ernstschweizer.ch/agb)) apply.

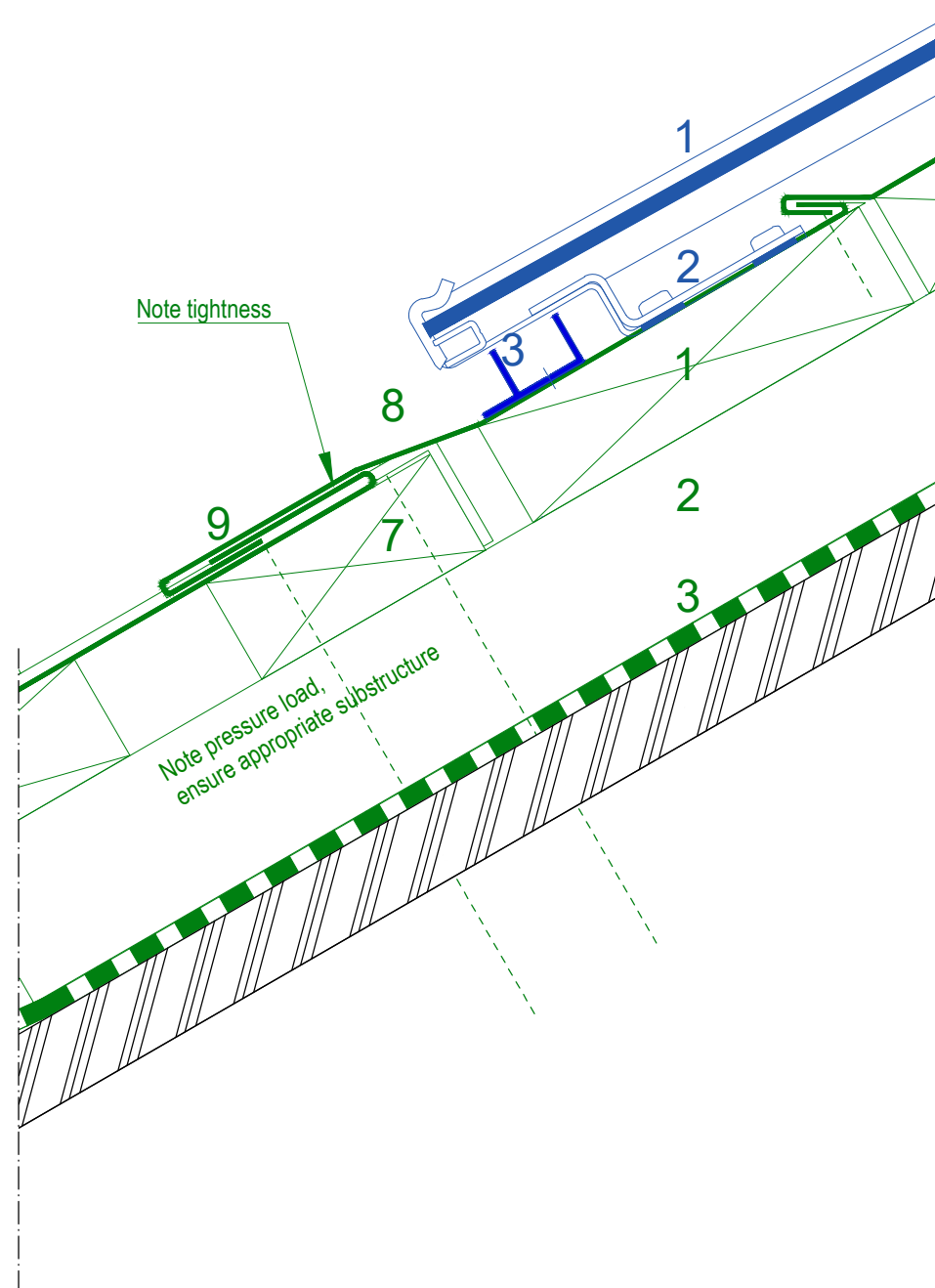
# Complete BIPV roof data inventory with Solrif

## Eave detail

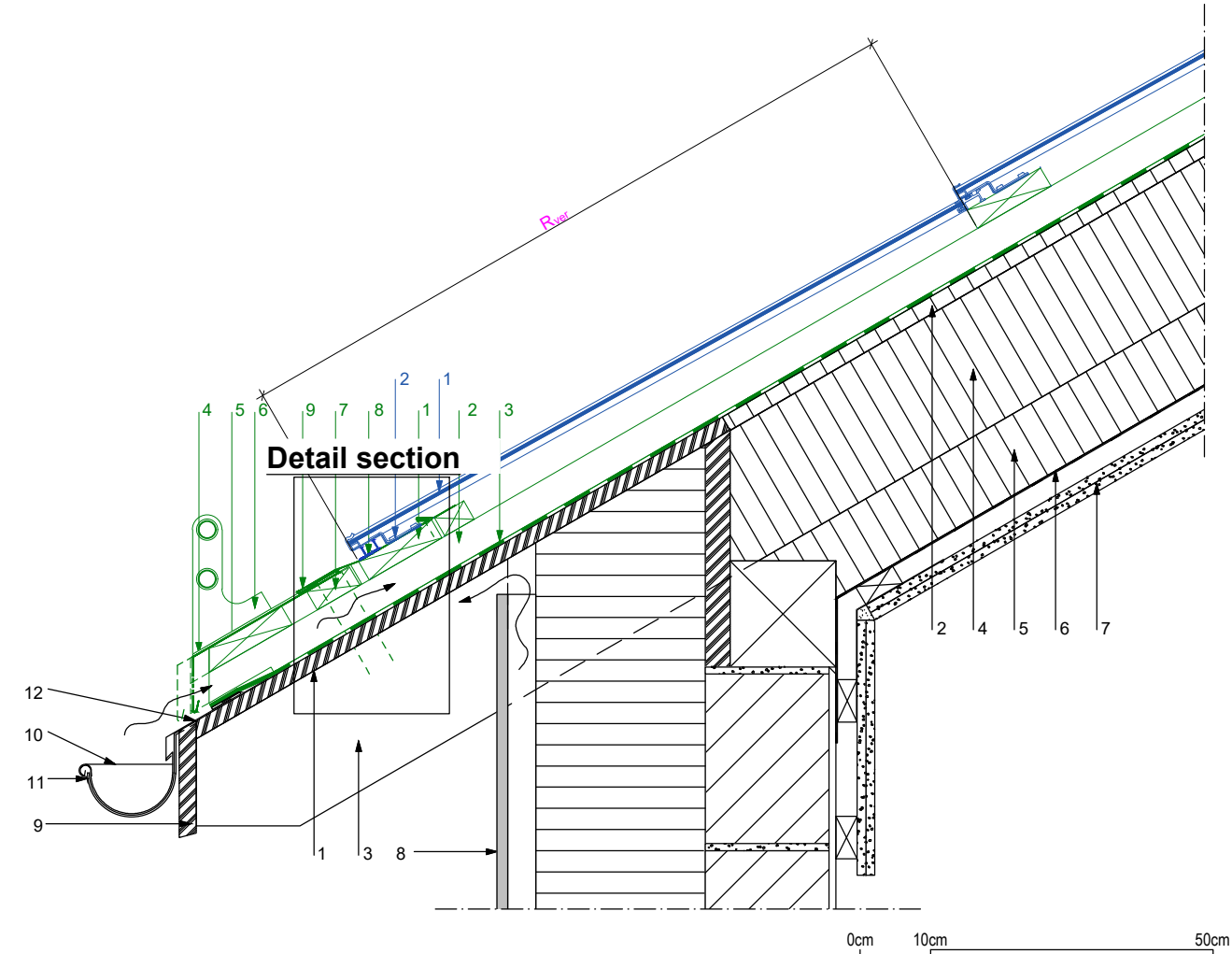
With snow guard on sheet metal - concealed fastening

Detail 1:10

Detail section 1:2



0cm 2cm 10cm



### Key

#### Solrif range:

- 1 Solrif module
- 2 Glass mounting bracket, with screw seal
- 3 Eave profile

#### Technical system elements:

- 1 Solrif batten screwed into wood, min. 120 x 30 mm; strength class C24 in accordance with EN 338
- 2 Counter batten (in accordance with guidelines) / ventilation space
- 3 Underroof (depending on roof pitch, in accordance with guidelines) Temperature resistance of film at least 80°C
- 4 Inlet plate, with perforated centre strip (directly ventilated) (cut-out in bracket area of snow guard profile)
- 5 Eave shutter
- 6 Snow guard profile with snow guard tube and bracket
- 7 Square timber
- 8 "Upper" sheet attached with adhesive
- 9 Single transverse rebate, from inclination of 25°

#### Construction / components:

- 1 Underside panelling
- 2 Soft wood fibreboard
- 3 Rafter layer
- 4 Thermal insulation between rafters
- 5 Thermal insulation under rafters
- 6 Vapour barrier
- 7 Inner panelling
- 8 Ventilated exterior wall construction
- 9 Fascia board
- 10 Gutter
- 11 Gutter hook
- 12 Inlet plate attached with adhesive

Applicability notice for structural connections for Solrif complete roof solutions © Ernst Schweizer AG.

This structural depiction serves as an implementation concept and as a recommendation for safe realisation. Images are illustrative and may differ from actual components.

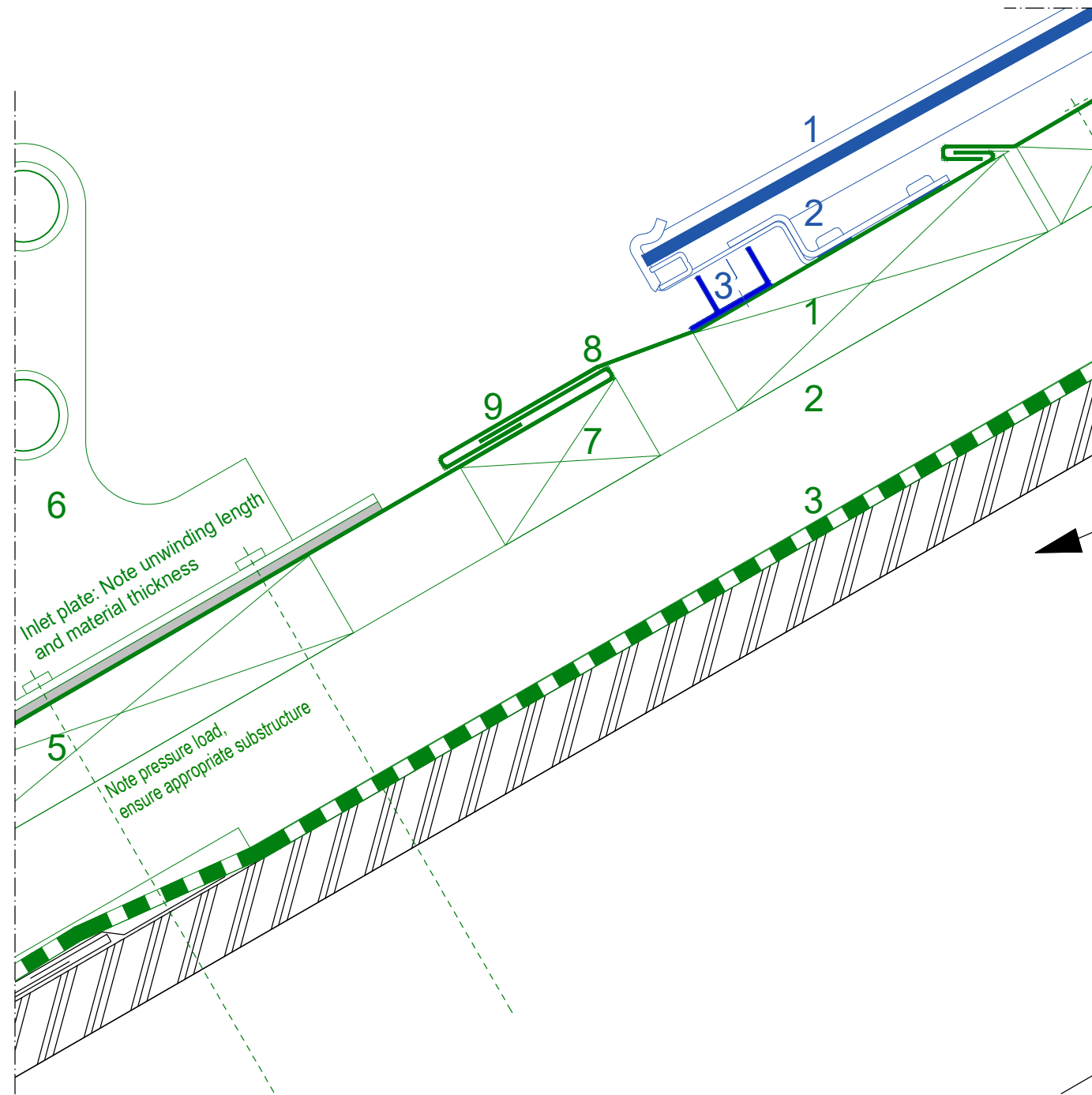
Because of national construction specifications and regional practices, these should be checked on a project-specific basis and adapted if necessary. Please refer to the SIA 232/1 standard for Switzerland, the ZVDH rules for Germany and ÖNROM B 4119:2018 03 Planning and execution of underroof constructions and underlays for Austria. Otherwise, the General Terms and Conditions of Ernst Schweizer AG ([www.ernstschweizer.ch/agb](http://www.ernstschweizer.ch/agb)) apply.

# Complete BIPV roof data inventory with Solrif

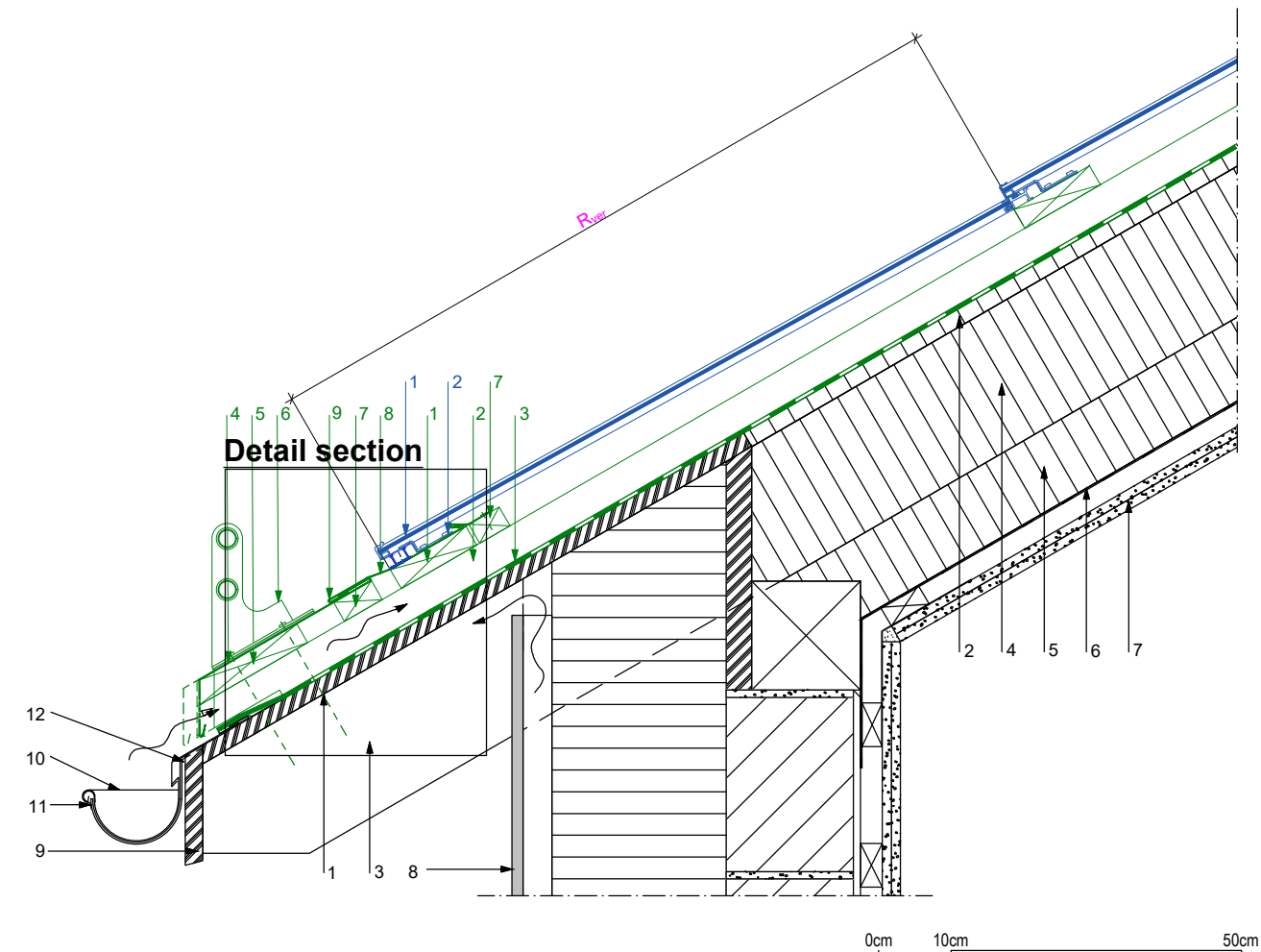
## Eave detail

With snow guard on sheet metal - fastening directly to sheet metal

**Detail section 1:2**



**Detail 1:10**



**Key**

**Solrif range:**

- 1 Solrif module
- 2 Glass mounting bracket, with screw seal
- 3 Eave profile

**Technical system elements:**

- 1 Solrif batten screwed into wood, min. 120 x 30 mm; strength class C24 in accordance with EN 338
- 2 Counter batten (in accordance with guidelines) / ventilation space
- 3 Underroof (depending on roof pitch, in accordance with guidelines) Temperature resistance of film at least 80°C
- 4 Inlet plate, with perforated centre strip (directly ventilated) (cut-out in bracket area of snow guard profile)
- 5 Eave shutter
- 6 Snow guard profile with snow guard tube, EPDM sealing strip; screwed onto sheet metal
- 7 Square timber
- 8 "Upper" sheet attached with adhesive
- 9 Single transverse rebate, from inclination of 25°

**Construction / components:**

- 1 Underside panelling
- 2 Soft wood fibreboard
- 3 Rafter layer
- 4 Thermal insulation between rafters
- 5 Thermal insulation under rafters
- 6 Vapour barrier
- 7 Inner panelling
- 8 Ventilated exterior wall construction
- 9 Fascia board
- 10 Gutter
- 11 Gutter hook
- 12 Inlet plate attached with adhesive

Applicability notice for structural connections for Solrif complete roof solutions © Ernst Schweizer AG.

This structural depiction serves as an implementation concept and as a recommendation for safe realisation. Images are illustrative and may differ from actual components.

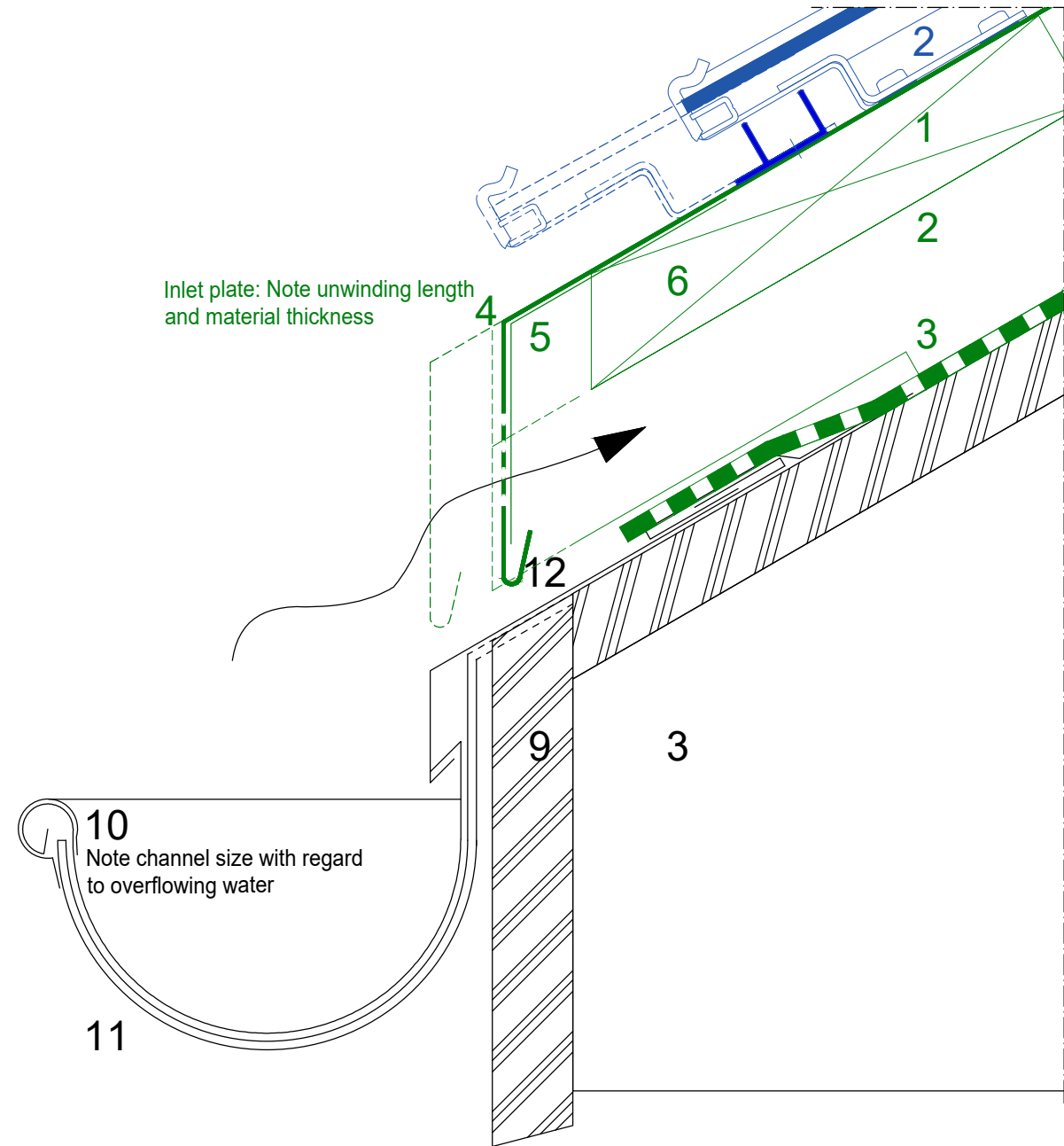
Because of national construction specifications and regional practices, these should be checked on a project-specific basis and adapted if necessary. Please refer to the SIA 232/1 standard for Switzerland, the ZVDH rules for Germany and ÖNROM B 4119:2018 03 Planning and execution of underroof constructions and underlays for Austria. Otherwise, the General Terms and Conditions of Ernst Schweizer AG ([www.ernstschweizer.ch/agb](http://www.ernstschweizer.ch/agb)) apply.

# Complete BIPV roof data inventory with Solrif

## Eave detail

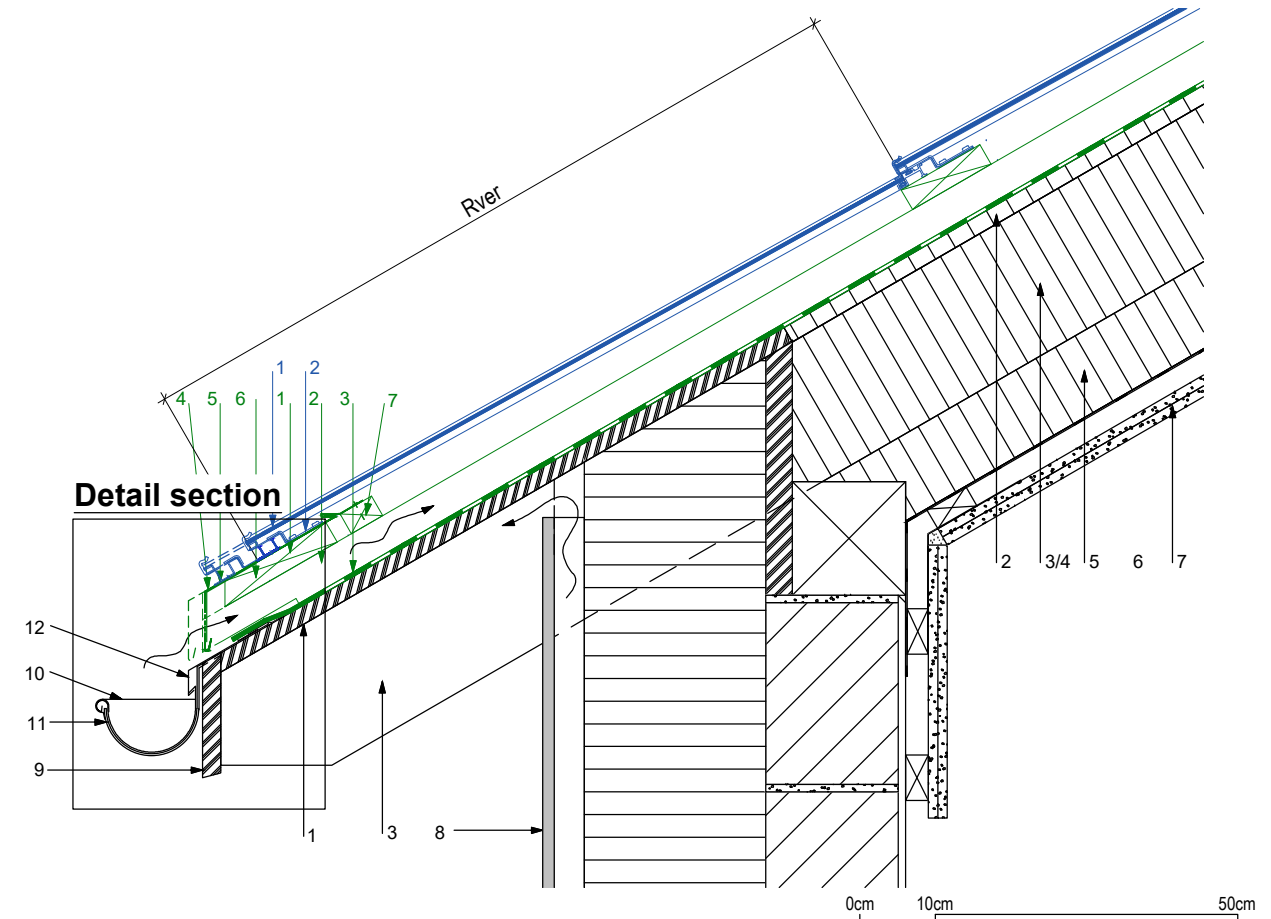
Ventilation opening above gutter -  
water running off underroof drained into channel

**Detail section 1:2**



0cm 2cm 10cm

**Detail 1:10**



**Key**

**Solrif range:**

- 1 Solrif module
- 2 Glass mounting bracket, with screw seal
- 3 Eave profile

**Technical system elements:**

- 1 Solrif batten screwed into wood, min. 120 x 30 mm; strength class C24 in accordance with EN 338
- 2 Counter batten (in accordance with guidelines) / ventilation space
- 3 Underroof (depending on roof pitch, in accordance with guidelines) Temperature resistance of film at least 80°C
- 4 Inlet plate, with perforated centre strip (directly ventilated) (cut-out in bracket area of snow guard profile)
- 5 Retaining plate, partially in front of counter batten
- 6 Eave shutter
- 7 Square timber

**Construction / components:**

- 1 Underside panelling
- 2 Soft wood fibreboard
- 3 Rafter layer
- 4 Thermal insulation between rafters
- 5 Thermal insulation under rafters
- 6 Vapour barrier
- 7 Inner panelling
- 8 Ventilated exterior wall construction
- 9 Fascia board
- 10 Gutter
- 11 Gutter hook
- 12 Inlet plate attached with adhesive

Applicability notice for structural connections for Solrif complete roof solutions © Ernst Schweizer AG.

This structural depiction serves as an implementation concept and as a recommendation for safe realisation. Images are illustrative and may differ from actual components.

Because of national construction specifications and regional practices, these should be checked on a project-specific basis and adapted if necessary. Please refer to the SIA 232/1 standard for Switzerland, the ZVDH rules for Germany and ÖNROM B 4119:2018 03 Planning and execution of underroof constructions and underlays for Austria. Otherwise, the General Terms and Conditions of Ernst Schweizer AG ([www.ernstschweizer.ch/agb](http://www.ernstschweizer.ch/agb)) apply.