

## Detail of vertical connection

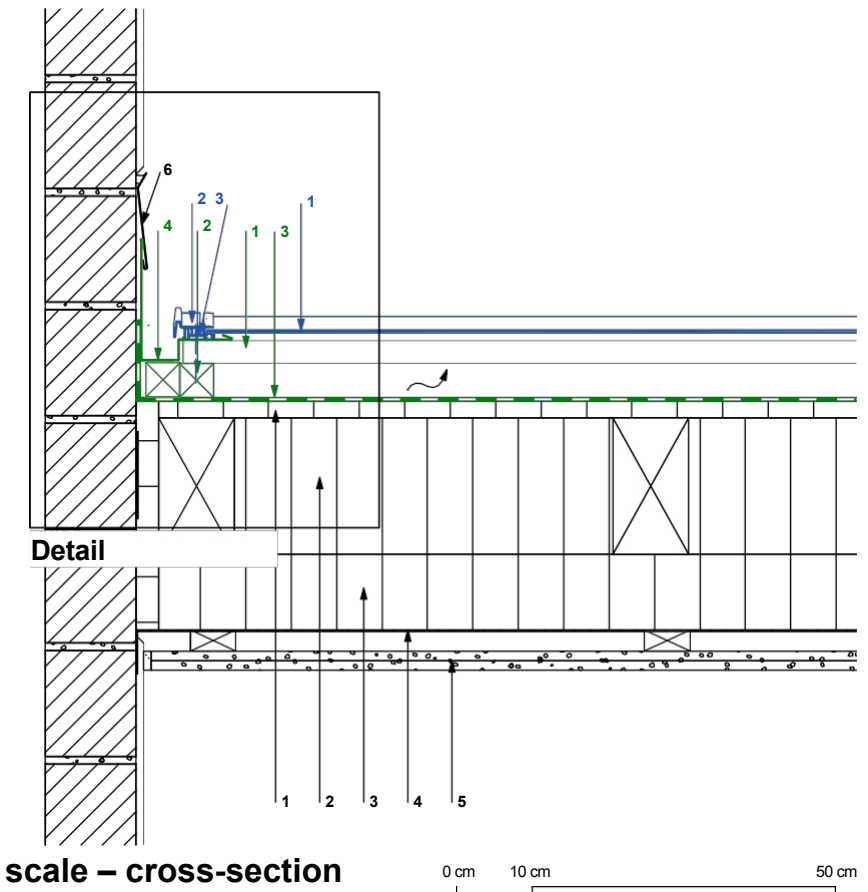
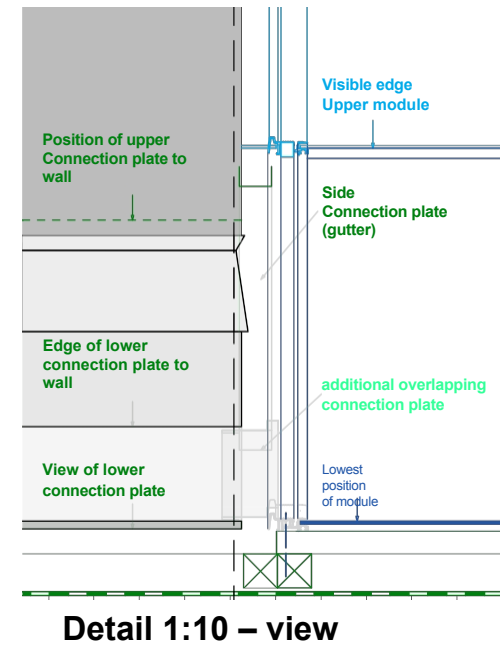
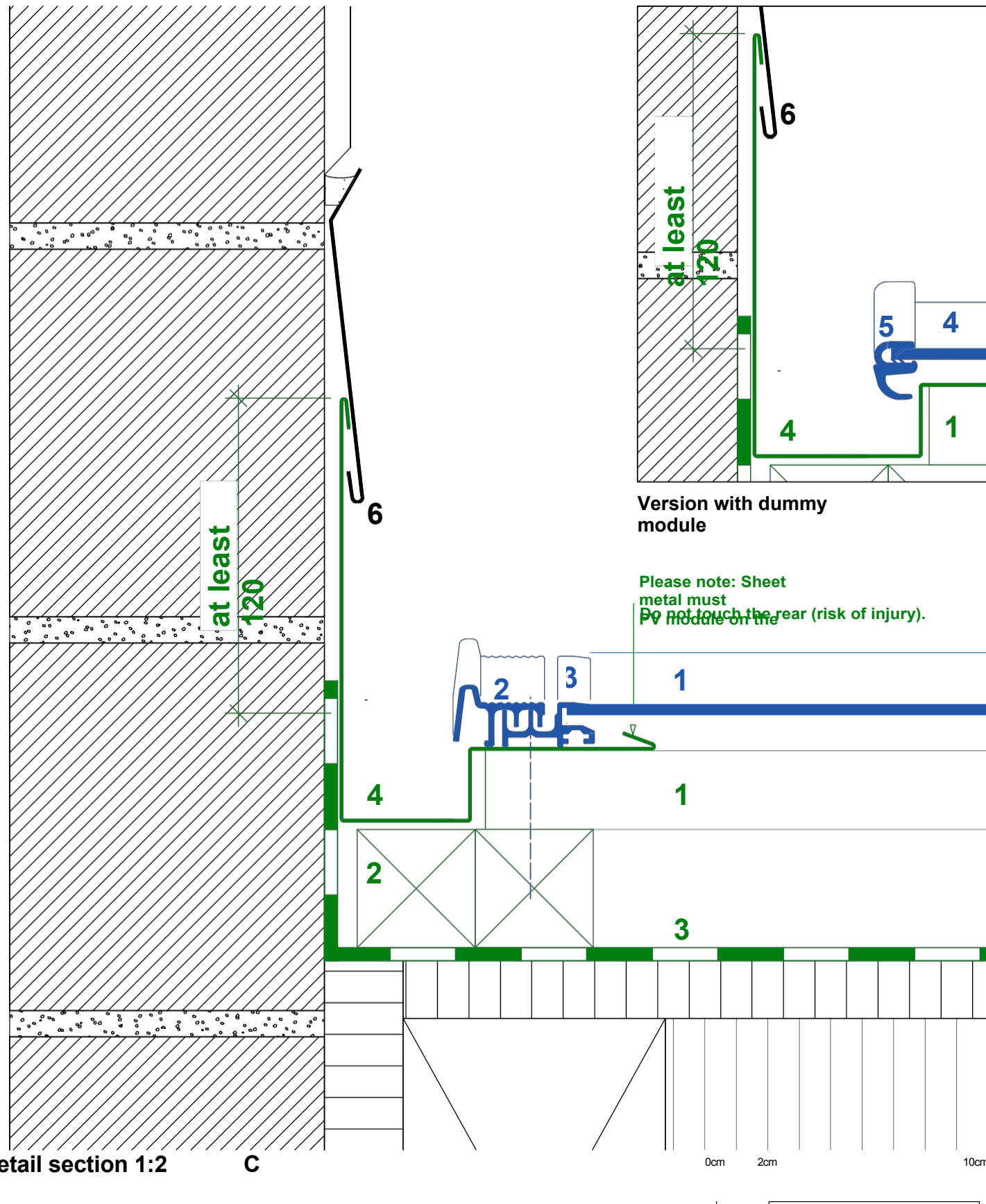
### Wall/chimney – Horizontal connection itt

**IN PROGRESS**

Schweizer:

Fixing/Watertightness > Sample roof panel roof windows

> Findings from connections to roof windows



Key	
<b>Solrif range:</b>	<b>Construction / Components:</b>
1 Solrif module edge profile	1 concrete fibreboard rafters / counter-battens
2 Mounting brackets screwed into the counter-battens; secure cut dummy modules using extra-long screws	2 thermal insulation between the rafters
3 EPDM edge protection profile with steel insert (version with sealing lip)	3 Thermal insulation beneath the rafters
4	4 Vapour barrier
5	5 Internal cladding
	6 Edging sheet with putty strip finish
<b>System components:</b>	
1 Solrif battens screwed into timber, min. 120 x 30 mm; strength class C24 in accordance with EN 338	
2 Counter-battens (in accordance with the guidelines) / ventilation space	
3 Roof underlay (depending on the roof pitch, in accordance with the guidelines) Temperature resistance of the membrane: at least 80°C	
4 Side sheet, designed as a gutter	

**Note on applicability: structural connections for Solrif® whole-roof solutions**  
 © Ernst Schweizer AG. This structural diagram serves as a design concept and a recommendation for safe implementation. Due to national building regulations and regional practices, these must be checked on a project-by-project basis and adapted where necessary. Please note that for Switzerland, the SIA 232/1 standard applies; for Germany, the ZVDH regulations; and for Austria, ÖNROM B 4119:2018 03 'Planning and Construction of Sub-roofs and Underlays'. In all other respects, the General Terms and Conditions of Ernst Schweizer AG ([www.ernstschweizer.ch/agb](http://www.ernstschweizer.ch/agb)) apply.